

Annual Report

2016

*The Singapore
Association
For The Deaf*



2017





CHARITY
TRANSPARENCY
AWARDS 2016

CHARITY TRANSPARENCY AWARDS

Singapore Association for the Deaf, The

Presented by :
The Charity Council



Table of Contents

- 2 Significant Milstones
- 3 Vision And Mission Statements
- 4 President's Message
- 6 Organisation Chart
- 7 The Executive Council (2015 to 2017)

THE SECRETARIAT

- 8 Staff Organisation Chart
- 9 SADeaf Staff
- 10 Membership
- 12 Community Services (CS)
- 18 - Hearing Care Centre (HCC)
- 20 - Itinerant Support Service (ISS)

Corporate Affairs

- 22 - Fundraising
- 24 - Volunteers Management
- 25 • Igniters
- 27 • Singapore Deaf Youth Section (SDYS)
- 28 • Signifique
- 29 • Social Group of the Deaf (SGD)
- 30 • NTU WSC RSP Deaf Community

Deaf Access Services (DAS)

- 32 - Sign Language
- 35 - Notetaking
- 36 - Interpretation

- 39 World Federation of the Deaf (WFD) 4 - 16 October 2017

Support at Designated Schools

- 40 Balestier Hill Secondary School (BHSS)
- 42 Boon Lay Secondary School (BLSS)

- 44 Financial Statements

SINGAPORE SCHOOL FOR THE DEAF (SSD)

- 81 Staff Organisation Chart
- 82 School Profile, Students' Profile and Programme and Activities
- 85 Projects with Other Schools

Mountbatten Vocational School

- 91 Staff Organisation Chart
- 93 Programmes and Activities

- 97 Appendix – Committees

Significant Milestones

Public Awareness – NDP (5-8 Aug 2016)



Flashmob team from SADeaf hopped on an NDP themed SMRT train.

Hosted the World Federation of the Deaf (WFD) RSA Events from 4 – 16 October 2016



8th WFD RSA Youth Camp



28th WFD RSA Representatives Meeting



Photo credit: The Straits Times

SADeaf a proud recipient of the Charity Transparency Award (CTA). (28 Sep 2016)



SADeaf President Ms Irene Yee receiving the Charity Transparency Award from Mr Gererd Ee, Chairman of the Charity Council.



From left to right: SADeaf Executive Director Ms Sylvia Teng, SADeaf President Ms Irene Yee, Chairman WFD RSA Organising Committee Mr Lim Chin Heng, WFD President Mr Colin Allen, Guest-of-Honour Associate Professor Dr Muhammad Faishal Ibrahim, WASLI President Ms Debra Russell and WFD RSA Regional Director Mr Yasunori Shimamoto.

Vision and Mission Statements

VISION

To be the leading organisation in advocating equal opportunity, in all aspects, for the Deaf and supporting the Deaf to reach their full potential.

MISSION

To assist the Deaf and Hard-of-hearing to achieve a better quality of life and to enable them to integrate and contribute to society.

HISTORY

The Singapore Association for the Deaf (SADeaf) is a member of the National Council of Social Service (NCSS), and is supported by the Community Chest of Singapore, Ministry of Social and Family Development (MSF) and Ministry of Education (MOE). The association is also affiliated internationally, to the World Federation of the Deaf (WFD) and, locally, to the Children's Charities Association (CCA).

Registration

SADeaf is registered with the Registry of Societies (252/55 WEL) and Commissioner of Charities (00057), has a Unique Entity Number for Societies (S62SS0061C) and is an approved Institution of Public Character (PC 000444, renewed from 1 January 2015 to 31 March 2017).

Corporate Governance

SADeaf has complied fully with the Governance Evaluation Checklist for Institutions of Public Characters (IPCs). The full checklist is available at www.charities.org.sg.

Conflict of Interest Policy

All Executive Council members, Chairpersons of Sub-committees and staff of SADeaf are required to read and understand the Conflict of Interest Policy in place and full disclosure of interests, relationships and holdings that could potentially result in a conflict of interest. The members and staff have fully complied with the Conflict of Interest Policy.

President's Message



The Singapore Association for the Deaf (SADeaf) is a proud recipient of the Charity Transparency Award (CTA) which was conferred on 28 September 2016. This is a great encouragement for us, a motivation for us to continue with our good practices.

One of our highlights of the year 2016 was the Singapore Sign Language (SgSL) awareness during the flash mob by SADeaf staff in MRT from 5 August. In Act 6, Our Home, Our People, National Day Parade 2016 on 9 August, the song signing segment led by Ms Neoh Yew Khim (Deaf) together with 150 special needs participants from seven voluntary organisation has tremendously created public awareness of SgSL.

Representatives from Deaf organisations around the world assembled in Singapore from 4 - 16 October 2016 for the 5th World Federation of the Deaf (WFD) Asia Conference in conjunction with the World Association of Sign Language Interpreters (WASLI) Asia meeting, the 8th WFD

Regional Secretariat for Asia (RSA) Youth Camp and WFD RSA Representatives Meeting. Guest-of-Honour for the Opening Ceremony on 14 October was Associate Prof Dr Muhammed Faishal Ibrahim, Parliamentary Secretary, Ministry of Education & Ministry of Social and Family Development (Singapore). Our Keynote Presenters & Plenary Presenters shared with us better insights to Deaf-related topics such as education, interpretation, language, and community. The WFD Conference ended on a high-note and the event was graced by SADeaf Patron Ms Ho Ching as Guest-of-Honour.

It was another fruitful year for the Community Services (CS) department and the services under its supervision, the Hearing Care Centre and Itinerant Support Service. For CS, there were 118 new clients added last year, bringing the number of registered clients to 5,415.

SADeaf Hearing Care Centre (HCC) started taking referral from Singapore General Hospital for its patients who are eligible for the Senior Mobility Fund (SMF). HCC continued its outreach efforts to various places for hearing screening and workshops throughout the year to provide quality hearing care services to all SADeaf clients.

In Itinerant Support Service (ISS), in Learning Support, the students received one-to-one learning intervention that is focused on language development, mathematical concepts and thinking skills. The Speech and Language Therapists worked on enhancing and equipping them with listening, articulation and language comprehension skills. In January 2017, a survey was conducted and 934 students were reported with hearing loss that

attend mainstream schools and Institutions. ISS will continue its support for the Deaf and Hard-of-Hearing students in mainstream education.

Corporate Affairs (CA) Department saw through 2 refreshing fundraising ideas such as Deafinitely Durian on 30 July 2016 and Seafood Feast on 18 February 2017 and which raised \$120,799. Under Voluntary Management in CA, On 16 April 2016, SADeaf Igniters organized an amazing food hunt race around Central Business District (CBD) where deaf / hearing participants tasted 'Sweet', 'Sour', 'Bitter' and 'Spicy' dishes in various hawker centres. On 11 March 2017, SADeaf Igniters also collaborated with Youth Corps Singapore to organize a tote bag painting event as part of Youth Corps Service week. Social Group of the Deaf (SGD) which aims to promote a healthy lifestyle and encourage the active participation of our Deaf members. Its highlight was a tour to Vietnam which was enriching and educational experience for 26 deaf participants. The highlight of Singapore Deaf Youth Section (SDYS) was the hosting of 8th WFDYS Youth Camp @ NACLI, Singapore (4 - 10 October 2016), which attracted more than 100 deaf youths from 30 countries.

On the association's effort to support the DeafBlind community, on 5 March 2017, Ms Lisa Loh together with the Interpretation team invited Ms Akiko Fukuda a DeafBlind individual to speak at a workshop for interpreters and befrienders of the community.

In Mountbatten Vocational School (MVS), the trainees of the Year 2014 cohort were rewarded for their hard work during the graduation ceremony

held on 27 August 2016, at the Holiday Inn City Centre Hotel. We were honoured by the presence of Ms Tin Pei Ling, the Member of Parliament for MacPherson, who graced the occasion as our Guest-of-Honour. In addition, we would like to thank all our work-based training partners for their contributions towards the successful job placements of our trainees in Food and Beverage Service, Food Preparation and Housekeeping operations.

Two Singapore School for the Deaf (SSD) pupils took the PSLE in 2016. One of them progressed to Beatty Secondary School and the other pupil continued his studies at Mountbatten Vocational School. The highlights of the year for SSD was a joint overnight camp with Lighthouse School the Sarimbun Scout Camp and a learning journey to Hong Kong, from 14-18 November 2016.

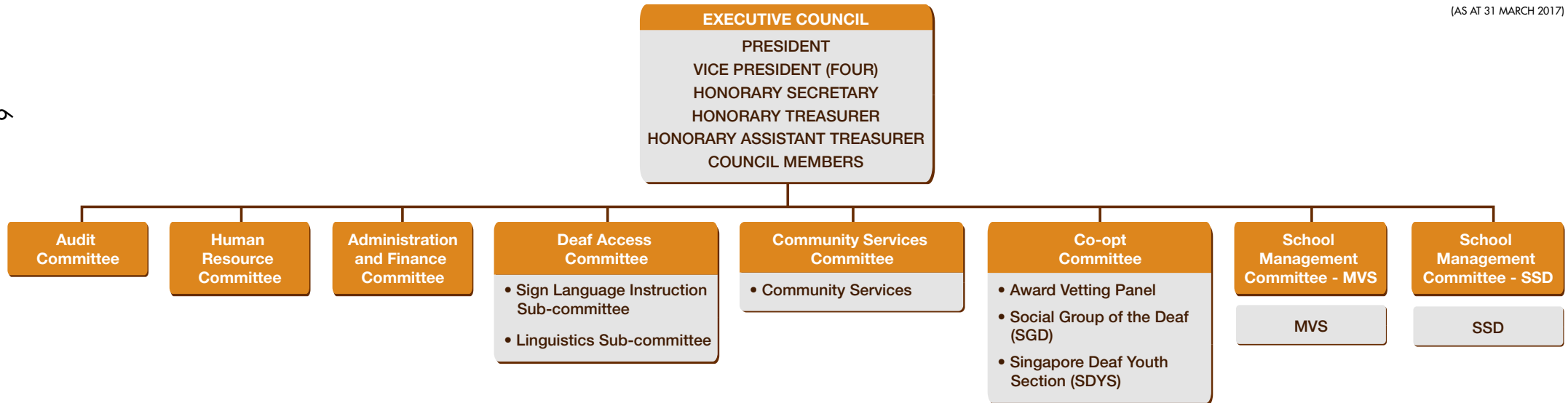
SADeaf will like to take this opportunity to thank all Executive Council members, volunteers, corporations, individuals, workbased training partners, NCSS, MOE, MSF, Tote Board and staff for all the wonderful support being rendered in the year 2016/2017. The past year's various achievements would not have been possible without your significant contributions.



Irene Yee Choy Peng
President

Organisation Chart

(AS AT 31 MARCH 2017)



The Executive Council (2015 to 2017)

Patron
Ms Ho Ching

President
Ms Irene Yee Choy Peng*

Vice President
Mr Chang Wah Weng
Chairman, Community Services Committee

Ms Tan Keng Ying*
Chairman, Deaf Access Committee

Mr Gregory Wee Chong Yeow
Chairman, MVS School Management Committee

Mr Martin Marini Vincent
Chairman, SSD School Management Committee

Honorary Secretary
Ms Wong Ee Kean
(Co-opted member with effect from 10 Mar 2016)

Honorary Treasurer
Dr Zahabar Ali
(Co-opted member with effect from 10 Mar 2016)

Honorary Assistant Treasurer
Ms Helen Lee
(Co-opted member with effect from 1 Apr 2016)

Council Members
Mr Chew Mun Kai*
Mr Steven Lee Chee Phat
Mr Neo Hock Ping*
Ms Valerie Tan Kian Wah
Ms Tay Lay Hong*
Mr Tan Eu Chong Sean
Ms Loh Yee Chen*
(Co-opted member with effect from 28 Jan 2016)
Mr Lim Chin Heng*
(Co-opted 28 Jan 2016; Resigned 16 Feb 2017)
Ms Claire Nazar
(Co-opted member with effect from 1 Mar 2016)

* Deaf/Hard-of-hearing

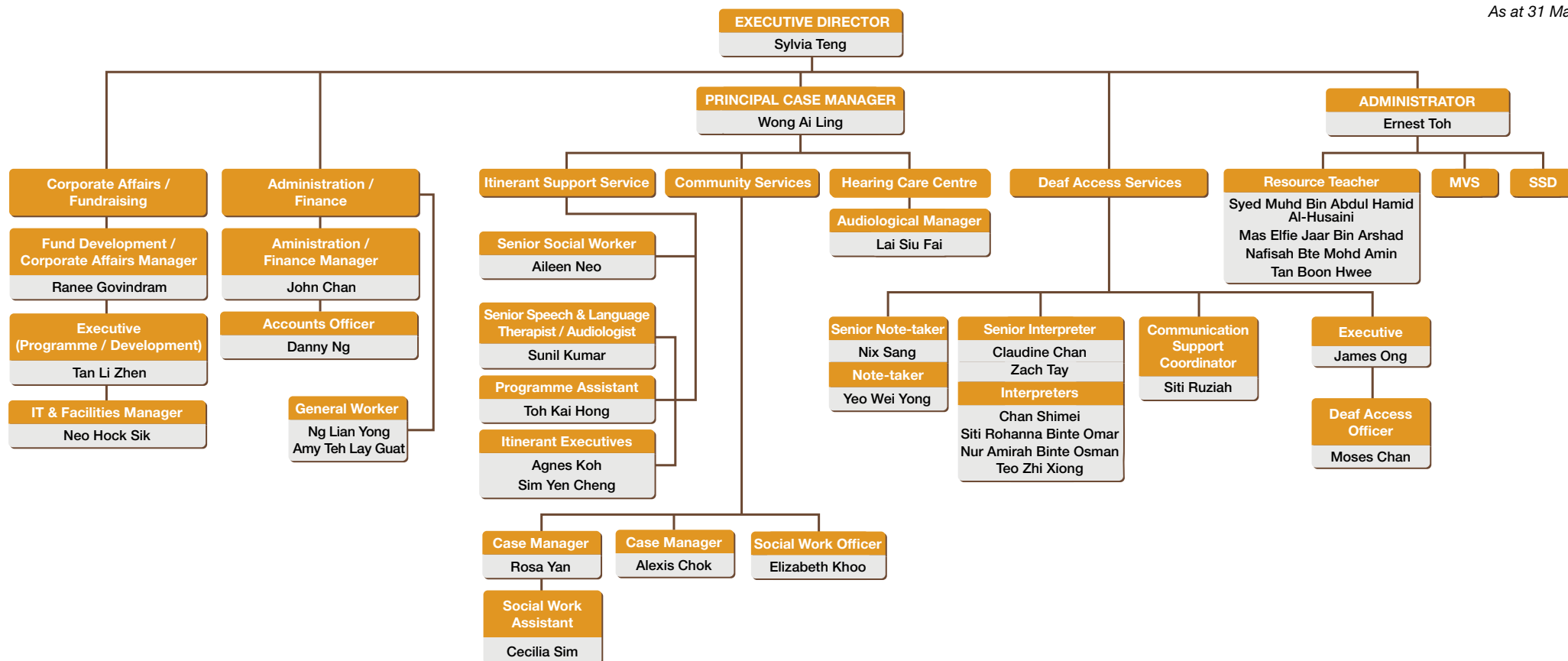


Back row: Dr Zahabar Ali, Mr Martin Marini Vincent,
(Left to right) Ms Claire Nazar, Mr Gregory Wee Chong Yeow,
Mr Neo Hock Ping, Mr Robert Chew Mun Kai.

Front row: Ms Tay Lay Hong, Ms Wong Ee Kean,
(Left to right) Ms Tan Keng Ying, Ms Irene Yee, Ms Lisa Loh,
Ms Valerie Tan, Ms Helen Lee.

Staff Organisation Chart

As at 31 Mar 2017





Membership

As at 31 March 2017, our membership statistics as follows:

Category	Junior	Ordinary	Life	Associate	Total	Corporate
Deaf	4	143	233	3	383	1
Hearing	0	62	126	7	195	1
Total	4	205	359	10	578	2

SADEAF MEMBERSHIP BENEFITS (Valid from 1 January 2017 to 31 December 2017)



JUST PLAY AT 10% OFF!

Fidgets (Grandstand) Pte Ltd
200 Turf Club Road, #03-10
The Grandstand, Singapore 287994



康和牙科
Town Hall Dental Surgery Pte Ltd



盧唯牙科
LOH DENTAL SURGERY

15% OFF SELECTED TREATMENTS

Loh Dental Surgery
Mouth Dental Surgery
Town Hall Dental Pte Ltd



I LOVE YOU

Community Services (CS)

COUNSELLING | INFORMATION & REFERRALS | CASE MANAGEMENT | FINANCIAL ASSISTANCE | EMPLOYMENT SUPPORT | COMMUNITY OUTREACH

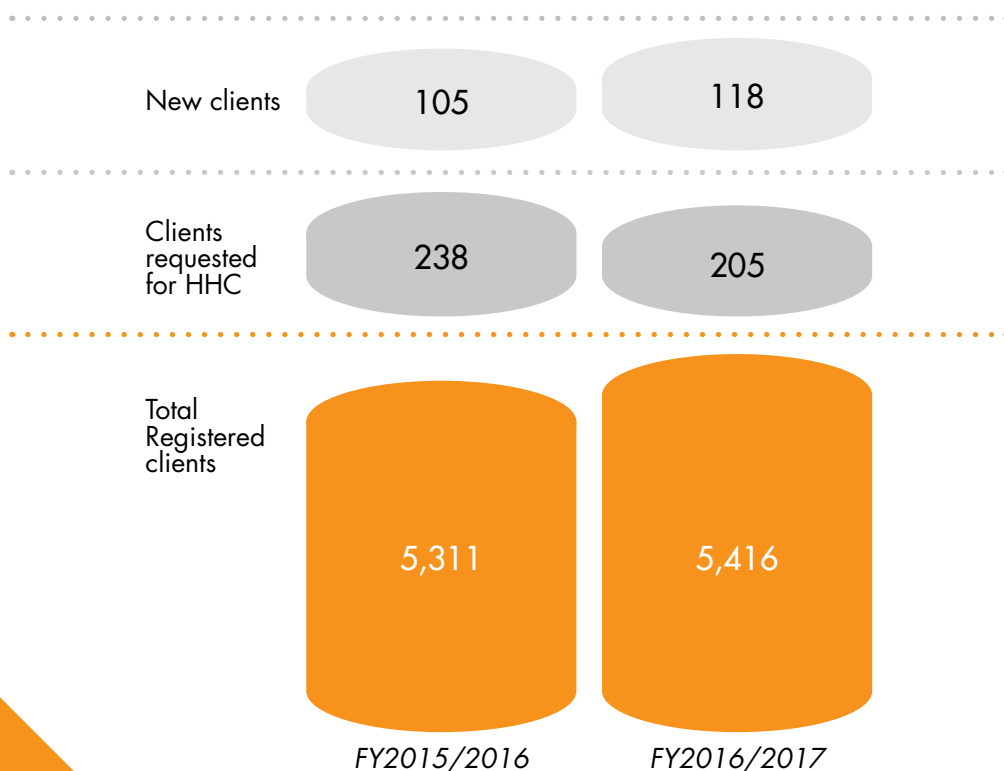
Community Services (CS) programmes assist the Deaf in achieving a better quality of life and enable them to integrate and contribute to society by catering to a wide spectrum of clients ranging from the young to the elderly. Counselling and case management are two of the core services to help clients better address their psychosocial and emotional needs. Other services include financial assistance, audiological services, and other administrative support.

The Community Services (CS) department is where Deaf and hard-of-hearing clients and their families to turn to for assistance in various areas. Our team of social workers, case managers and social work assistants are on hand to provide a diverse range of services to clients in need.



Our Statistics

as at 31 March 2017

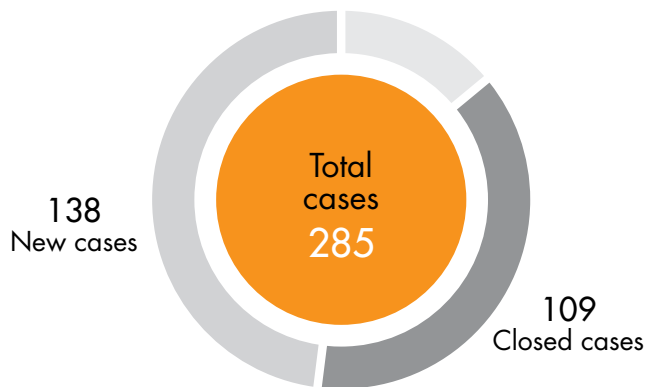


Community Services (CS)

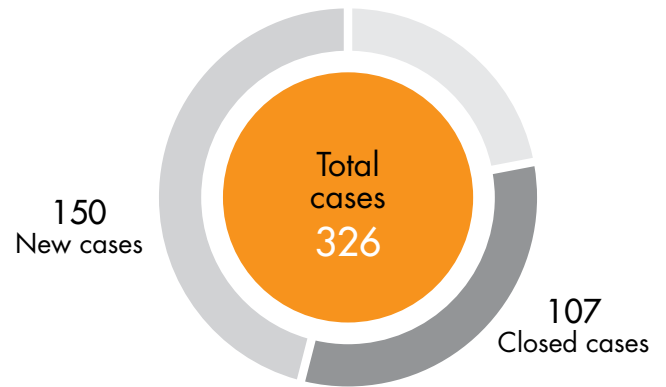
Our Statistics

as at 31 March 2017

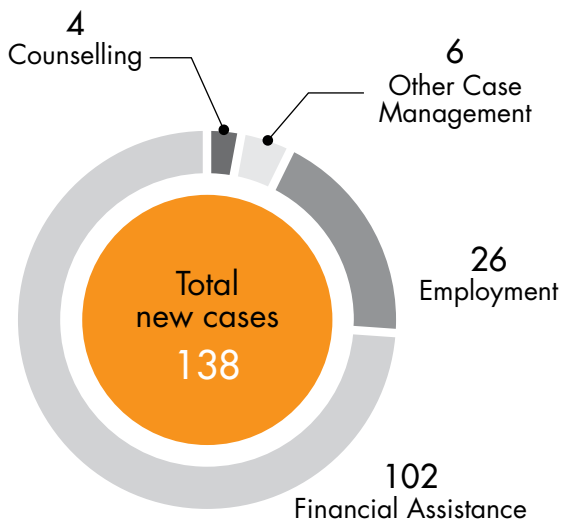
Output indicator – Basic Programme Data



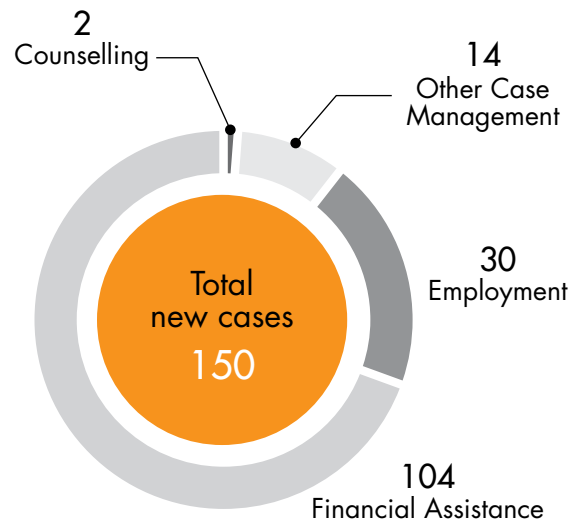
FY2015/2016



FY2016/2017



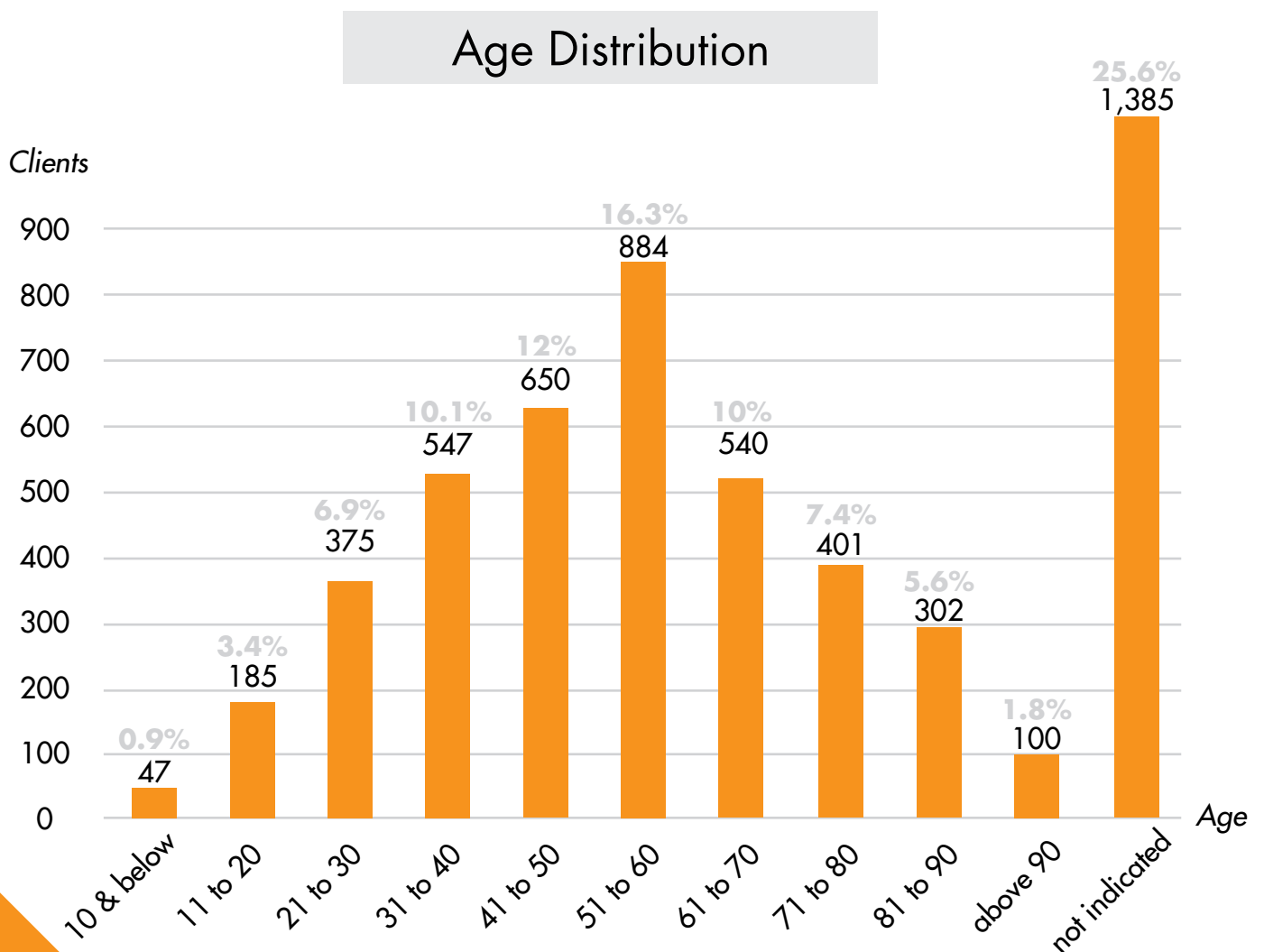
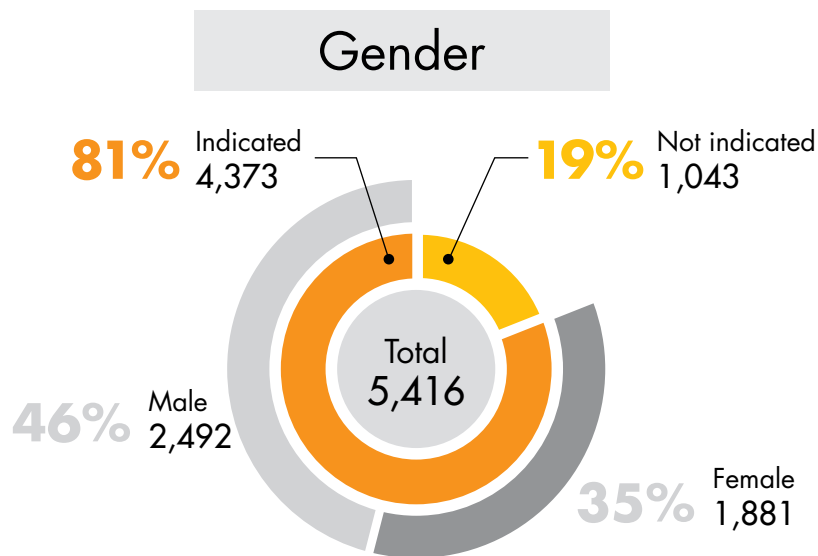
FY2015/2016



FY2016/2017

Community Services (CS)

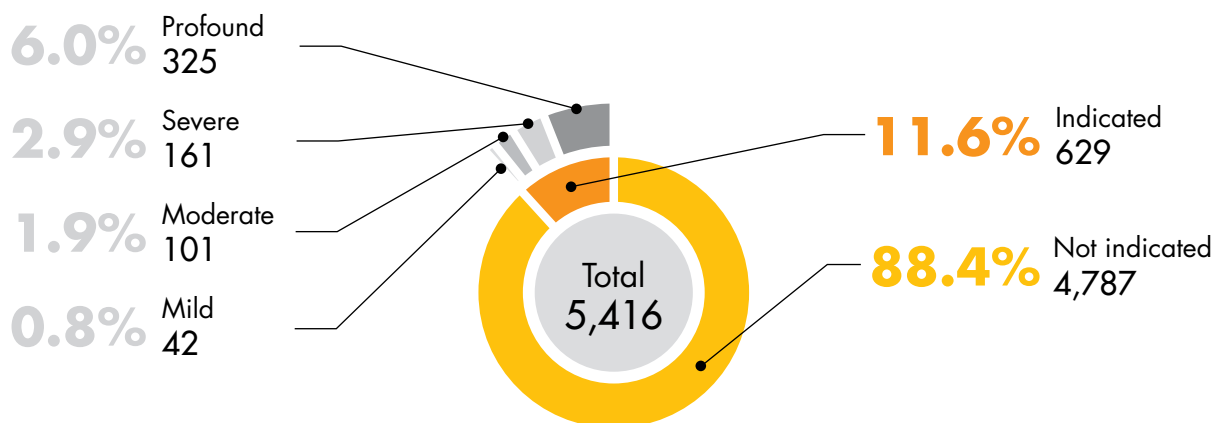
Client's Profile



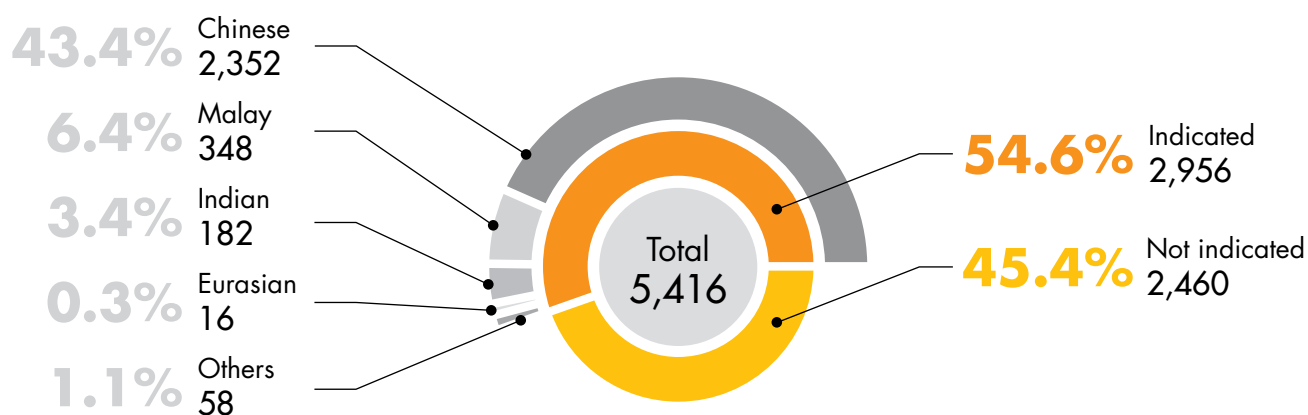
Community Services (CS)

Client's Profile

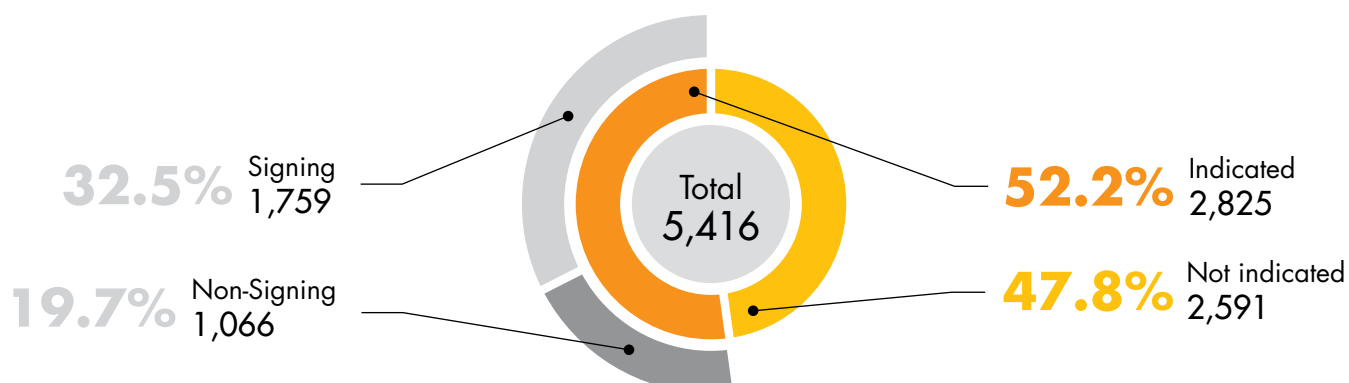
Degrees of Hearing Loss



Race Distribution



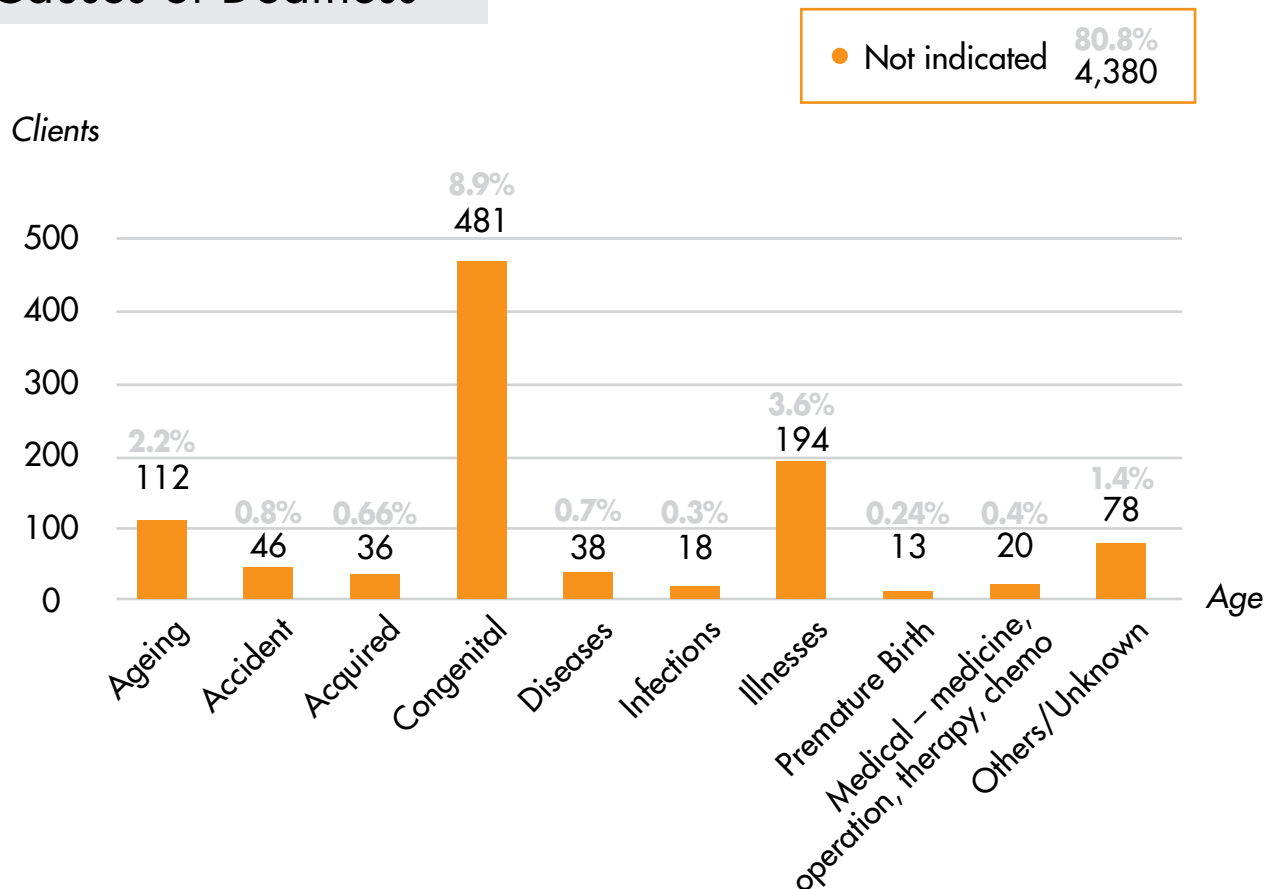
Signing vs Non-Signing Clients



Community Services (CS)

Client's Profile

Causes of Deafness



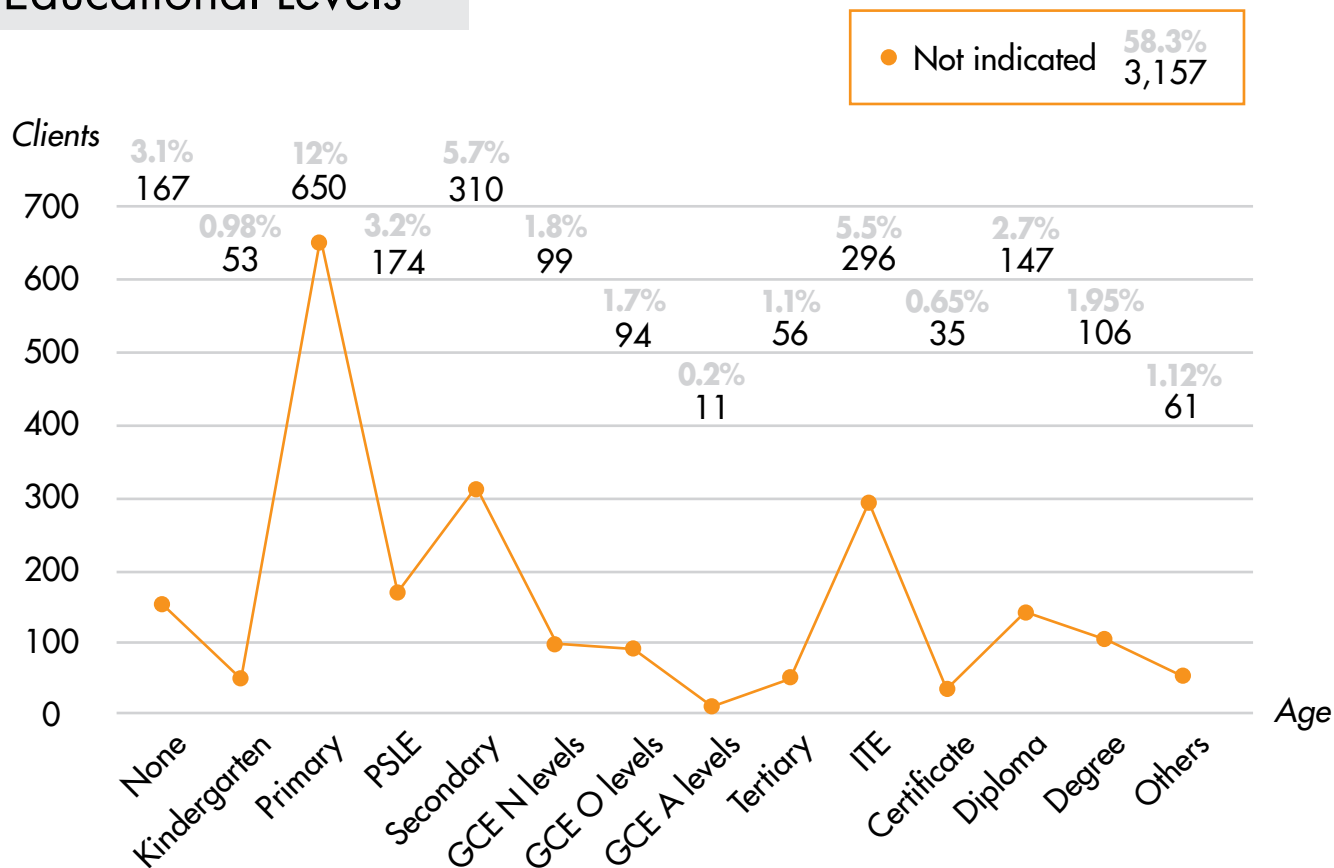
Programmes

Community Services worked together with volunteer groups to provide programmes for the deaf clients for hope to see them lead independent lives and to integrate with the society.

Community Services (CS)

Client's Profile

Educational Levels



No of programmes

82

129

No of deaf clients
benefited from CS
programmes

1,771

1,982

FY2015/2016

FY2016/2017

Hearing Care Centre (HCC)

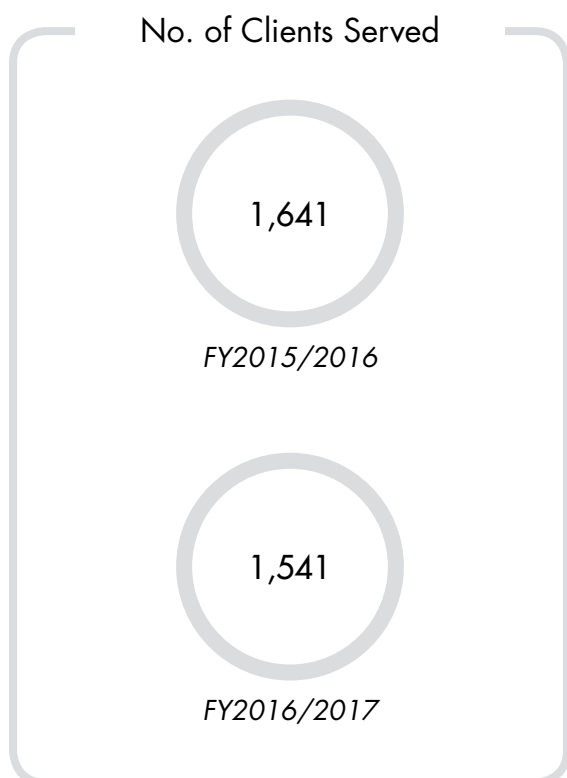
HEARING TESTS | OUTREACH | HEARING CARE SERVICES SALE OF HEARING AID EQUIPMENT, BATTERIES & ASSISTIVE HEARING DEVICES

Staffed by a qualified audiologist, the Hearing Care Centre (HCC) provides a full spectrum of hearing care-related services. Besides hearing tests and consultations, clients and members can also get their ear moulds made at the HCC and purchase batteries and other accessories at nominal rates.

Objectives

- To assist in preserving residual hearing of the Deaf community and develop auditory processing ability through appropriate means.
- To provide affordable or free quality hearing care services to all clients of SADeaf.

SADeaf Hearing Care Centre has started to take in referral from Singapore General Hospital patient for eligible Senior Mobility Fund (SMF) cases from November 2016.



Hearing Care Centre (HCC)

Date	No. of Participants	Activity
5 April 2016	93	Hearing Screening/Outreach - Singapore Cheshire Home Outreach
6 April 2016	27	Conduct workshop - Parkview Primary School
20 Oct 2016	100	Conduct workshop - Ngee Ann Polytechnic
13 Nov 2016	60	Conduct Workshop - Eurasian Association
Feb to March 2017	30	Hearing Screening - Uber Drivers
Total	310	

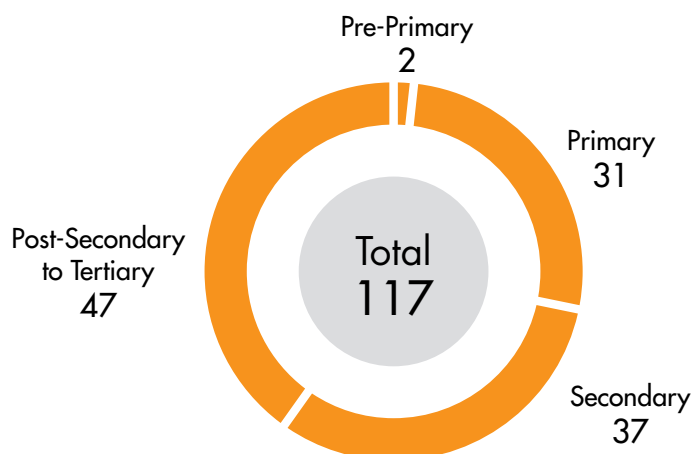


Itinerant Support Service (ISS)

SOCIAL WORK | LEARNING SUPPORT | SPEECH AND LANGUAGE THERAPY

Programme Enrolment

The ISS programme is opened to students with hearing loss, who are Singapore citizens or Permanent Residents attending mainstream education. The ISS team works in partnership with families, schools and the community for the well-being of students with hearing loss. It also aims to empower families with the appropriate skills and knowledge to nurture their children with hearing loss, so that they will gain confidence, independence and are better integrated into society.



Social Work

The various services provided included information and referrals, case management, financial assessments, counselling for the clients and their families, and school visits.

Learning Support

The students received one-to-one learning intervention. The Itinerant Executives focused on language development, mathematical concepts and thinking skills. These were the key focus areas that had been assessed to be the learning needs of the students.

Speech and Language Therapy

The students received one-to-one intervention. The Speech and Language Therapists worked on enhancing and equipping them with listening, articulation and language comprehension skills.

Itinerant Support Service (ISS)



Partnership

ISS also worked with various schools and organisations, such as Community Chest, Singapore Management University and Goldman Sachs to organise activities and outings for our clients.

A survey on the number of students with hearing loss attending mainstream schools / institutions was conducted in January 2017. A total of 934 students were reported with hearing loss at various educational levels.

Corporate Affairs (CA)

The Corporate Affairs Department co-ordinates fundraising events, community and corporate partnerships, media & publicity awareness programmes as well as volunteer management. SDeaf organised the following fundraising projects with the help of our supporters.

Fundraising



Deafinitely Durian

SDeaf held its inaugural Deafinitely Durian fundraising event on 30 July 2016, Saturday at SDeaf hall.

A total of \$120,799 was raised for the 2 events.



Seafood Feast

The Seafood feast was held on 18 February 2017, Saturday at the SDeaf hall. Together with the help from Mountbatten Vocational School staff, we had a successful event.

Donation Box

Donation boxes were placed at various companies. As at 31 March 2017, SDeaf had collected \$6,410 via the donation boxes. We are appreciative and grateful to the supporters for their generous support towards the projects.



Corporate Affairs (CA)

Fundraising

Citi-YMCA Youth For Causes 2016

One team from Hwa Chong Institution selected SADeaf as the beneficiary for the Citi-YMCA Youth for Causes and raised a total of \$4,484 through their various fundraising activities held between June to September 2016.

Charity Car Wash

A total of 2 car wash events was held during the financial year 2016/2017.

28 May 2016

- supported by Deutsche Bank with over 20 volunteers supported the event from 10am to 5pm.

22 January 2017

- this was the 3rd consecutive year we worked with NTU Riders Club volunteers for a one-day event car wash from 9am – 6pm.

A total of \$5,253 was raised from the 2 car wash events.



Deutsche Bank volunteers washing cars for a good cause



Group picture with NTU Riders Club volunteers and Ms Sylvia Teng, Executive Director of SADeaf

We would also like to thank our Ambassadors for the Deaf such as AV-Science Marketing Pte Ltd, ERA Singapore Pte Ltd, Kentucky Fried Chicken Management Pte Ltd, Marina Bay Sands, Mun Siong Engineering Ltd and Sivantos Pte Ltd for the continued support for our events in cash and in kind as well as all our individual donors, volunteers and well-wishers for their generous contributions and we look forward to their continuous support.

Corporate Affairs (CA)

Volunteer Management

SADeaf values all our volunteers who played a role in the success of many of the programmes and activities organised by SDeaf.

For the year in review, volunteer orientations were held on 7 May 2016 and 3 December 2016, whereby new volunteers were given an overview of SDeaf's services and briefed on their role as a volunteer.

Over 20 volunteers attended the annual Volunteers' Appreciation held at Civil Service Club @ Changi Resorts Bowl on 25 February 2017 to honour our devoted volunteers. Everyone enjoyed the buffet dinner, bowling games and networking. Ms Sylvia Teng, Executive Director of SDeaf, presented a certificate of appreciation to each volunteer.

On behalf of the Executive Council, Management and staff, we would like to express our heartfelt appreciation to all our volunteers for their dedication and commitment to serve our Deaf and Hard-of-hearing community.



Group photo: Vice President & Chairman of MVS SMC - Mr Gregory Wee and Executive Director Ms Sylvia Teng with our volunteers.

Corporate Affairs (CA)

Volunteer Management

Igniters

Igniters help to organise events and activities for SDeaf's clients in the community at large, including children, adults and elderly folks, and also lend a helping hand during fundraising and special events.

SDeaf Igniters organised two major events in the FY2016/2017

● Igniters Project 1 : Amazing food hunt

On 16 April 2016, SDeaf Igniters organized an amazing food hunt race around Central Business District (CBD) for members of the local Deaf community. Throughout the event, participants had the opportunity to try dishes of different tastes, 'Sweet', 'Sour', 'Bitter' and 'Spicy' at popular local hawker centres such as Lau Pa Sat, Maxwell food centre, Amoy street food centre and 'Chinatown Complex food centre.

Deaf participants formed several groups with the Igniters volunteers and raced to solve different puzzles at each station. The event ended with bonding over lunch to foster interaction among the Deaf and Hearing participants.

Bonding among the Deaf and Igniters volunteers



Participants attempting to solve a game puzzle

Corporate Affairs (CA)

Volunteer Management

● Igniters' Project 2 : Care to colour event

On 11 March 2017, SADeaf Igniters collaborated with Youth Corps Singapore to organise a tote bag painting event for members of the local Deaf community as part of Youth Corps Service week. We are humbled to have Minister for Culture, Community and Youth, Ms Grace Fu Hai Yien joining us in the event as the guest of honour.

Through the event, hearing volunteers from SADeaf and Youth Corps not only learned more about their Deaf counterparts through icebreakers, interactions and Deaf awareness programme but also jointly designed tote bags with the Deaf for seniors under the care of Lions Befrienders.

Prizes were also given out to the top few best designed tote bags.



Members of the Deaf community and participants from Youth Corps Singapore posing for a group photo with guest of honour, Minister for Culture, Community and Youth, Ms Grace Fu Hai Yien



Minister Culture, Community and Youth, Ms Grace Fu Hai Yien with SADeaf president Ms Irene Yee and volunteers.

Corporate Affairs (CA)

Volunteer Management

Singapore Deaf Youth Section (SDYS)

Singapore Deaf Youth Section (SDYS) is a youth section of the Singapore Association for the Deaf (SADeaf). It is for Deaf youth aged 18-35 in Singapore. SDYS together with World Federation of the Deaf Regional Secretariat for Asia Youth Section (WFD RSA YS), are committed to promote rights of Deaf youths and groom Deaf youths to be future leaders in Singapore's Deaf community.

The highlight of the year was the 8th WFDYS Youth Camp @ NACLI, Singapore (4 - 10 October 2016), which attracted more than 100 deaf youths from 30 countries.

Date	Venue	Activity/Outing
20-22 May 2016	NACLI	2 nd National Deaf Youth Camp
4-10 Oct 2016	NACLI	8 th WFDYS Youth Camp
11-12 Oct 2016	YWCA	6 th WFD RSA YS Representative Meeting
18-20 Nov 2016	Japan	National Debate Meeting of Japanese Federation of the Deaf Youth Section
26 Nov 2016	Ngee Ann Civic Plaza	Children's Charity Association
25 Feb 2017	YWCA	8 th WFDYS Youth Camp - Four delegates from SDYS attended
4 Mar 2017	SADeaf	Share 8 th WFDYS Youth Camp - Four delegates from SDYS attended
24-26 Mar 2017	Aloha Loyang	1 st National Deaf Teen Camp - Finding your own identity



Corporate Affairs (CA)

Volunteer Management

Signifique

Signifique celebrated its 7th anniversary at SADeaf premises on 5 May 2016, enabling both deaf and hearing volunteers to interact with each other. More new volunteers have also joined over the past year and have bonded through practices for performances and celebrations.

Signifique had a very fruitful 2016-17, having been invited to perform at the following events:

Date	Event	Venue
5/11/2016	Purple Parade	Suntec City
26/11/2016	Children's Charities Association Christmas Fair	Ngee Ann City Civic Plaza
2/12/2016	International Day of DPA	SGenable Village
24/1/2017	NTU Social Impact Week 2017	NTU
17/2/2017	BCA-MNDRC Charity Golf Dinner (GOH: Senior Minister of State for National Development and Home Affairs, Mr Desmond Lee)	Singapore Island Country Club



Signifique participated in NDP 2016 with a group of deaf performers together with other people with special needs in the special segment of song signing.

Corporate Affairs (CA)

Volunteer Management

Social Group of the Deaf (SGD)

An official SDeaf social group which aims to promote a healthy lifestyle among the Deaf community. It hopes to encourage the active participation of our Deaf members through various activities such as cycling, cooking contests, adventure trips, brisk walking, traditional games and baking courses. It is open to Deaf and hard-of-hearing ages 21 and above.

The highlight of last year was a tour to Vietnam which was enriching and educational. It also provided the 26 deaf participants a chance to experience a different culture.

Date	Venue	Activity/Outing
13-14 May 2016	East Coast Park	Night Cycling
14-15 May 2016	Bintan Island	Weekend Dive Trip
16 July 2016	Peranakan Museum	A visit to Peranakan Museum
13 August 2016	YMCA hall	Deaf Friendship Day 2016
12-19 Nov 2016	Hanoi, Vietnam	Tour to Hanoi, Vietnam



Corporate Affairs (CA)

Volunteer Management

NTU WSC

In March this year, Regular Service Project for the Deaf Community, also known as RSP (DC), organised Hi! SINGAPORE (Hi!SG) and SPARKZ, on 5th March and 18th March, respectively.

Hi!SG is an annual event organised to bring together both the Deaf and the Hearing communities through a day of fun activities. The purpose of Hi!SG is to forge new friendships between the Hearing and Deaf participants, to heighten awareness and understanding about the Deaf community, as well as to break the psychological barrier of communicating to the Deaf. This year's theme for Hi!SG is Allegiance. Participants were divided into eight factions; each faction embarked on an amazing race around various areas in Woodlands and Sembawang and competed against each other through station games. The event ended with a finale game of Ninja Tag at Woodlands Galaxy Community Club, whereby the faction with the most points collated succeeded the late-King's throne.

SPARKZ is an annual event that targets the younger generation of the Deaf community, more specifically, the tutees involved in RSP (DC)'s weekly tuition sessions. The aim of this event is to further enhance the weekly tuition experience for these tutees and provide them with an avenue to build up on their social and emotional competencies and to learn beyond the classroom setting. It also serves as a platform that encourages both tutees and tutors to strengthen their bond. The theme for SPARKZ 2017 is "Ninjas: Clash of the Clans!" Ninjas are well lauded as figures who have displayed immense resilience, loyalty, respect and bravery. To inculcate and reinforce the essential values of a Ninja, various station games were conducted in Nanyang Technological University where tutees and tutors worked together, showing that unity is strength and igniting that spark of confidence in them as they move towards a common goal. The event concluded with a finale game whereby each centre, comprising of both tutors and tutees, worked to build a fortress out of recycled materials to protect the ninja figurines earned from the earlier half of the day.



Corporate Affairs (CA)

Volunteer Management



Deaf Access Services (DAS)

INTERPRETATION | NOTETAKING | SIGN LANGUAGE COURSES & DEAF AWARENESS PROGRAMME

The Deaf Access Services (DAS) department focuses on communication support for Deaf and Hard-of-hearing clients. Our DAS team of sign language interpreters, notetakers and coordinators help clients and members gain full and equal access to information and communication in schools, workplaces, hospitals and courts of law among other settings.

DAS also regularly conducts sign language courses & workshop such as Singapore Sign Language (SgSL) and deaf awareness programmes for the Deaf and Hard-of-Hearing community as well as other interested parties including the general public.

"Train the trainer" workshop by Dr Bill Vicars

The 15 trainees attended SgSL "Train the Trainer" workshop conducted by Dr Bill Vicars from 30th July to 7th August 2016. They were trained with knowledge in sign linguistics, techniques in teaching Singapore Sign Language "SgSL" as well as to assist in curriculum design and developing resource materials for services.

Subsequently, they prepared teacher's handbook, student's workbook and powerpoint slides as well as materials for SgSL Basic Level 1. They also attended mock class to get familiarised with the teaching of class.

Sign Language Instruction

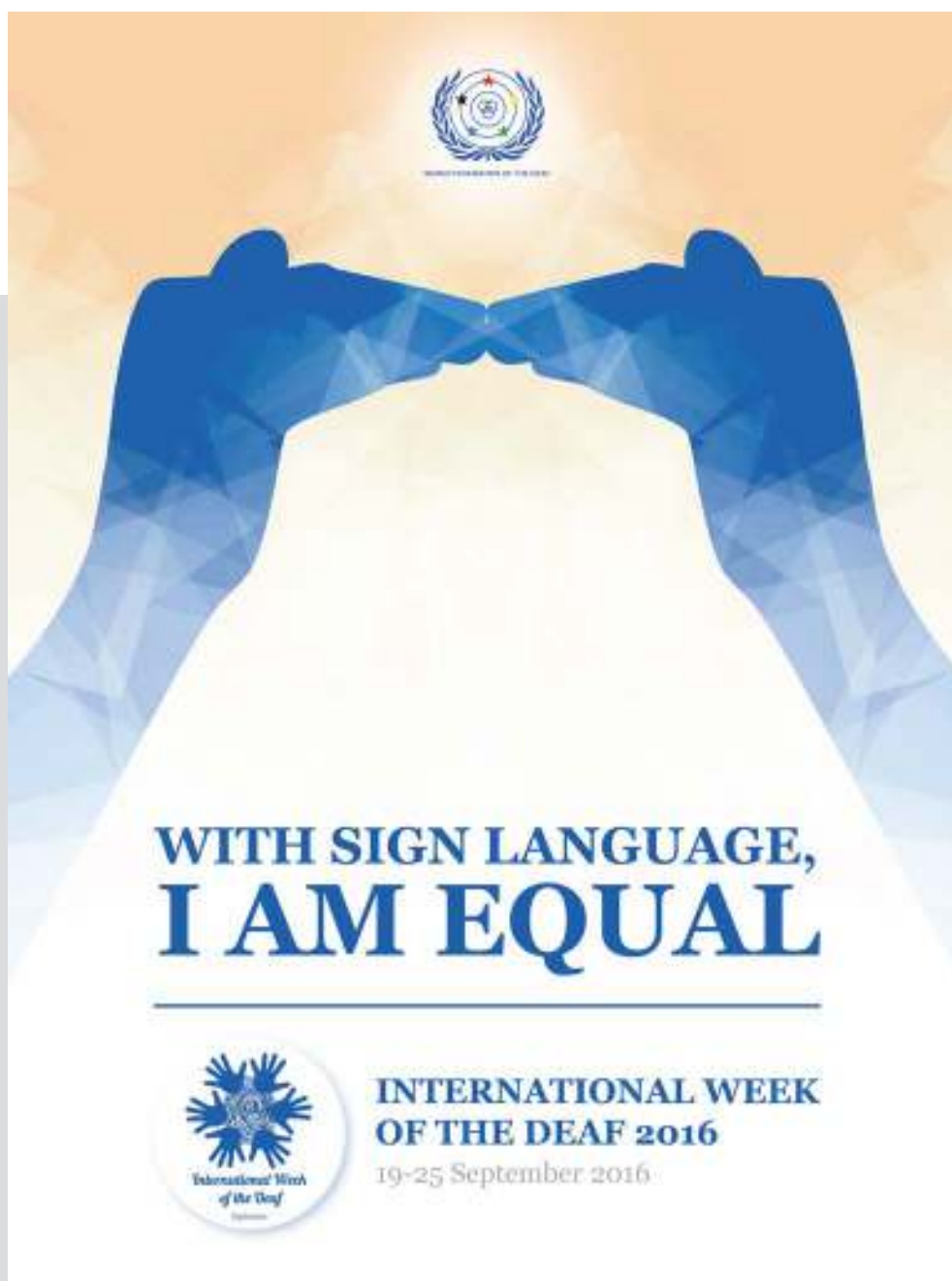
Courses	No. of participants	
Deaf Awareness Programme / Customised Sign Language	2,465	
SEE Advanced Stage 1	11	
SEE Advanced Stage 2	11	
Singapore Sign Language (SgSL) Level One	185	
Basic Sign Communication	169	
Basic SgSL & Basic SgSL on Medical Terms	216	
SgSL Half-Day and Full-Day Workshop	184	
Professional & Workplace	17	
Total	3,258	

Deaf Access Services (DAS)

International Week of the Deaf 2016

- International Week of the Deaf is the only week in a year that sees highly concerted global advocacy to raise awareness about the deaf community at individual, community and governmental level. It is about gathering together, becoming united, and showing that unity to the rest of the world.
- International Week of the Deaf strives to promote the rights of deaf people and highlight specific human rights topics that merit attention.
- International Week of the Deaf is aimed to spread message as widely as possible by ensuring that the campaign(s) will be noticed and the message will also pass to wider society through sufficient media coverage.

This year, we shared the voices and signs from our local interpreters, CODA, Deaf parents, Deaf individuals on publicity in conjunction with International Week of the Deaf 2016 theme “With Sign Language, I am Equal”.



Deaf Access Services (DAS)

Local intern from Galladuet University

SADeaf hosted Phoebe Tay, a local intern, for 9 weeks. During her stint with us, she interviewed and collected information from 48 participants for our SgSL research and development project.

Sharing Session - Overseas Guest

Mr Terry Riley from UK was invited by SADeaf to give a talk on British Sign Language (BSL) Charter and Media in the UK on 30 May 2016.



Deaf Access Committee Retreat

The Deaf Access Committee Retreat was conducted at IBIS Bencoolen on Saturday, 11 March 2017.



Deaf Access Services (DAS)

Notetaking



The Notetaking section held its first NT Appreciation Night in December 2016, in recognition of the work that our Community Notetakers have done. Notetakers managed to cover 99% of all NT requests in Singapore for FY2016/2017.

Since its inception in 2015, the service has seen requests come in not just mostly from tertiary institutions but also from companies and individuals from all walks of life.

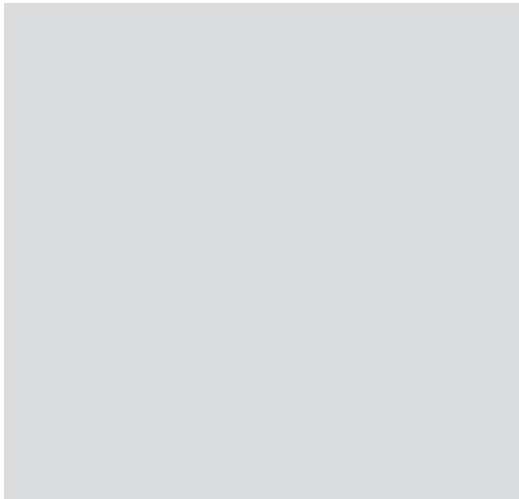
Tapestry Playback Theatre performance

In September 2016, live notes for a Tapestry Playback Theatre performance were projected to an audience comprises deaf/hard-of-hearing and hearing an especially challenging task considering that all materials were improvised.

Deaf Access Services (DAS)

Interpretation Team

The SDeaf Interpretation Team had a fulfilling year with opportunities to interpret in major events such as the National Day Rally 2016, the World Federation of the Deaf (WFD) Asia Conference held in October 2016 and the Singapore Budget Speech in March 2017.



Deaf Access Services (DAS)

WFD Asia Conference 2016

11-12 October
2016

The World Association of Sign Language Interpreters (WASLI) Asia held their meeting in conjunction with the WFD Asia Conference 2016 proudly hosted in Singapore. Our delegates from Singapore, Ms Claudine Chan and Ms Chan Shimei, engaged in discussions pertaining to interpreting issues with delegates from other countries, namely, Bangladesh, Cambodia, Hong Kong, India, Indonesia, Iran, Korea, Macau, Malaysia, The Philippines, Taiwan, Thailand and Japan.

During the Conference, the Singapore interpreting team also had the opportunity to work with interpreters from Australia, Malaysia, The Philippines and United States. (See photo on the right)



Deaf Access Services (DAS)

DeafBlind Interpreting Workshop

The interpretation team and Deafblind advocate, Ms Lisa Loh, had worked together to organise a workshop catered to interpreters and befrienders of the DeafBlind Community. The speaker was Ms Akiko Fukuda who as a DeafBlind individual, had a team of Interpreter-Guides working alongside her throughout the workshop.

5 March 2017



World Federation of the Deaf (WFD) RSA events

Representatives from Deaf organisations around the world assembled in Singapore from 4 - 16 October 2016 for the 5th World Federation of the Deaf (WFD) Asia Conference as well as the 8th WFD Regional Secretariat for Asia (RSA) Youth Camp and WFD RSA Representatives Meeting.

Guest-of-Honour for the Opening Ceremony on 14 October was Associate Professor Dr Muhammed Faishal Ibrahim for Parliamentary Secretary, Ministry of Education & Ministry of Social and Family Development (Singapore).

Our Keynote Presenters & Plenary Presenters provided us with better insights to Deaf-related topics such as education, interpretation, language, and community.

We would like to extend our appreciation to our organising partners for their support:

Mr Colin Allen (President, WFD)
World Federation of the Deaf - Official

Dr Debra Russell (President, WASLI)
World Association of Sign Language Interpreters (WASLI)

Mr Yasunori Shimamoto (Regional Director, WFD RSA)
World Federation of the Deaf Regional Secretariat for Asia

The WFD Conference ended on a high-note and the event was graced by SADeaf Patron Ms Ho Ching as Guest-of-Honour.

SADeaf patron
Ms Ho Ching
being greeted and
welcomed by staff
& volunteers.



From left to right: SADeaf Executive Director Ms Sylvia Teng, SADeaf President Ms Irene Yee, Chairman WFD RSA Organising Committee Mr Lim Chin Heng, WFD President Mr Colin Allen, Guest-of-Honour Associate Professor Dr Muhammad Faishal Ibrahim, WASLI President Ms Debra Russell and WFD RSA Regional Director Mr Yasunori Shimamoto.



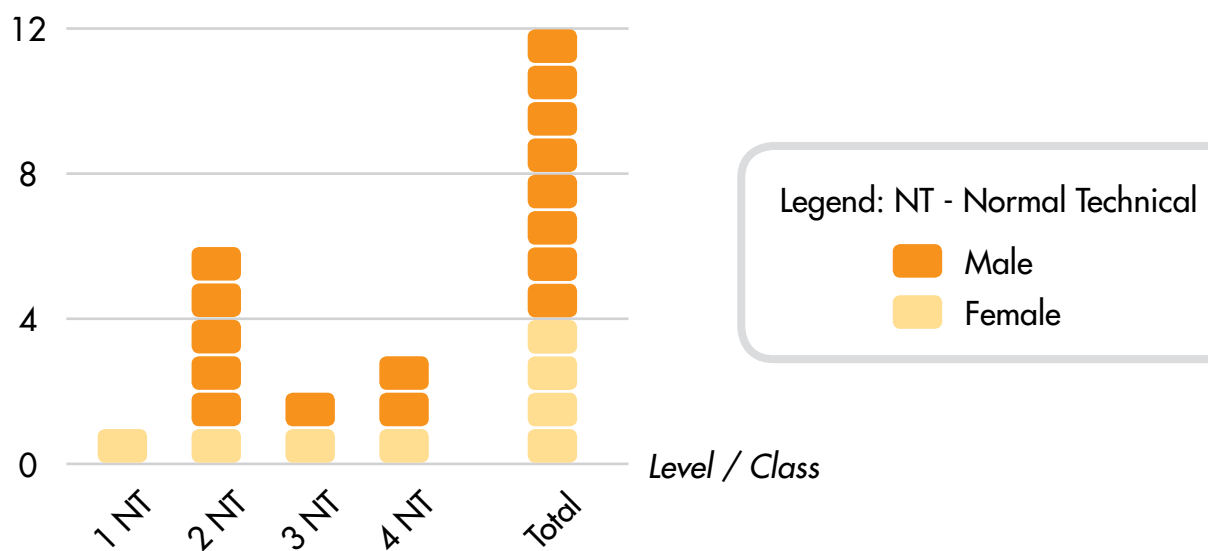
Support At Designated Schools

Balestier Hill Secondary School (BHSS)

Enrolment

Enrolment as at 31 March 2017 (Currently in Beatty Secondary School)

Students



Outcome of deaf students

There was no graduating student in 2016



Deaf students participating in a school-wide event in the school hall

Balestier Hill Secondary School (BHSS)

Programmes And Activities

Academic/Enrichment Programmes

Deaf students attend regular lessons with hearing students in a classroom setting with resource teachers (RTs) interpreting for them. RTs conduct tutorial sessions with the Deaf during mother-tongue periods. RTs also interpret enrichment courses and remedial lessons for them during and after school sessions.

Character Development Programme

In Conversation with Mentor session (ICM) was conducted during the form teacher period every week in year 2016. This was to build better rapport between teachers/mentors and students and to create opportunities for students to express their feelings and concerns. The RTs took charge of one level each as their mentors.

Enrichment Programmes/Career Guidance

Enrichment classes like Info-Communication and Technology (ICT) and Learning Journeys to places of historical interest in Singapore were held regularly for students of all levels.

Friendship Bonding Day at Beatty Secondary School

On 25th October 2017 all students including our Deaf students report to Beatty Secondary School for a day of fun and laughter. They got to play games and tour their new school and centre for Deaf students which commenced in January 2017.



Deaf students with their school mates during a friendship-bonding programme

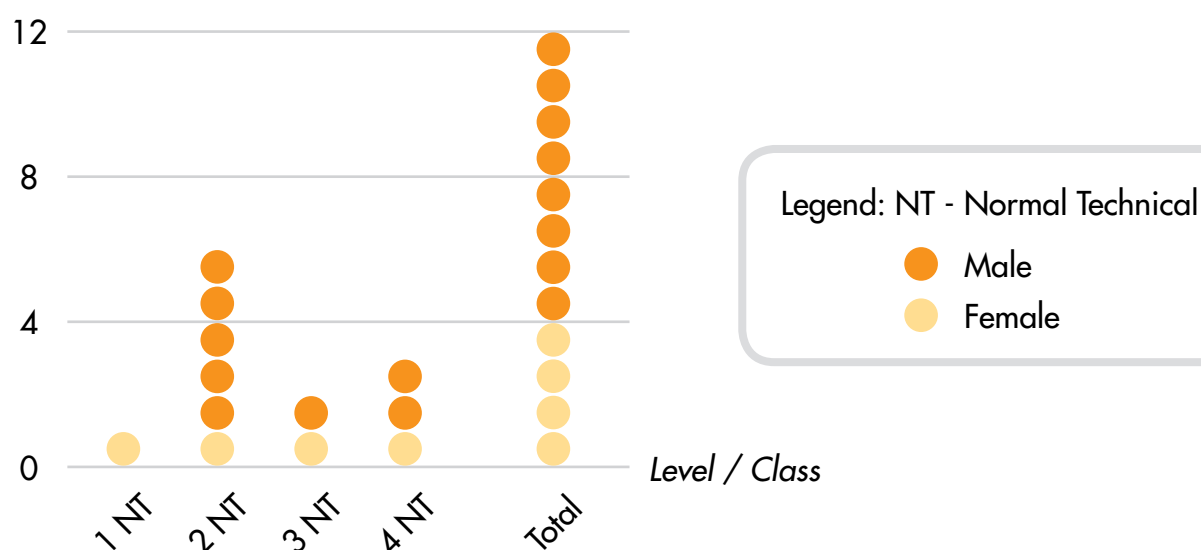
Support At Designated Schools

Boon Lay Secondary School (BLSS)

Enrolment

Enrolment as at 31 March 2017 (Currently in Beatty Secondary School)

Students



Achievements

BLSS has also put in place appropriate mechanisms to better track the students' learning outcomes. 100% of the deaf students in the year 2016 passed their mid-year and end-of-the-year examinations and are now pursuing their respective course of study at Beatty Secondary School.

In the area of sports our deaf pupils are equally talented. They also participated in the Futsal match and they have done proud to Boon Lay Secondary School by winning the match as seen in the picture below:



Boon Lay Secondary School (BLSS)

Programmes And Activities

Academic/Enrichment Programmes

The deaf students attended regular lessons with the hearing students in a classroom setting with the 3 Sadeaf resource teachers (RTs) interpreting for them for the different subjects. RTs also conducted remedial sessions with the deaf during mother-tongue periods. RTs are tasked to interpret for enrichment courses and talks during and after school sessions.

Character Development Programme

BLSS has always emphasised the importance of character development and this is clearly stated in its vision and mission statement..

RTs in BLSS are constantly guiding students to become better citizens. Developing good rapport between teachers and the students is of utmost importance too. The RTs had gone the extra mile to create opportunities for students to express their feelings and concerns clearly.

BLSS placed great emphasis on Co-Curricular Activity (CCA) and other programmes that enrich the students' life. All the deaf students met many of the CCA performance targets set out for them to achieve for year 2016.

Values - In - Action (VIA) had also been incorporated into the curriculum to raise awareness in the students on the importance of helping others who were less fortunate. In view of the importance of VIA, the Deaf students had participated in the following activities in year 2016

- Flag Days for various voluntary organisations.
- School camps at various venues according to the class levels.
- The Gardening Club.

BLSS continually reinforces the school's core values in the deaf students to ensure that each develops a positive viewpoint of education as a means of achieving a good quality of life.



Our students signing to their peers on International Day for the Deaf

THE SINGAPORE ASSOCIATION FOR THE DEAF

[UEN. S62SS0061C]
[IPC No. IPC000444]

[Registered under the Societies Act (Chapter 311)
in the Republic of Singapore]

AUDITED FINANCIAL STATEMENTS FOR THE FINANCIAL YEAR ENDED 31 MARCH 2017

CONTENTS

Statement by the Executive Council	2
Independent Auditor's Report	3
Statement of Financial Position	7
Statement of Financial Activities	8
Statement of Changes in Funds	12
Statement of Cash Flows	14
Notes to the Financial Statements	15

Fiducia LLP

[UEN. T10LL0955L]
Public Accountants and
Chartered Accountants of Singapore

71 Ubi Crescent,
Excalibur Centre, #08-01
Singapore 408571
T: (65) 6846.8376
F: (65) 6725.8161

The Singapore Association for the Deaf
[UEN. S62SS0061C]
[IPC No. IPC000444]

*Audited Financial Statements
Financial Year Ended 31 March 2017*

STATEMENT BY THE EXECUTIVE COUNCIL

In the opinion of the Executive Council, the accompanying financial statements as set out on pages 7 to 32 are drawn up so as to present fairly, in all material respects, the state of affairs of The Singapore Association for the Deaf (the "Association") as at 31 March 2017 and the results, changes in funds and cash flows of the Association for the financial year then ended.

At the date of this statement, there are reasonable grounds to believe that the Association will be able to pay its debts as and when they fall due.

The Executive Council, comprising the following, has on the date of this statement, authorised the issue of the financial statements.

President	Irene Yee Choy Peng
Vice President	Chang Wah Weng
Vice President	Gregory Wee Chong Yeow
Vice President	Marini Martin Vincent
Vice President	Tan Keng Ying
Honorary Secretary	Wong Ee Kean
Honorary Treasurer	Dr Zahabar Ali
Honorary Assistant Treasurer	Helen Lee Lai Ken
Council member	Chew Mun Kai
Council member	Claire Nazar
Council member	Lisa Loh Yee Chen
Council member	Neo Hock Ping
Council member	Steven Lee Chee Phat
Council member	Sean Tan Eu Chong
Council member	Tay Lay Hong
Council member	Valerie Tan Kian Wah

For and on behalf of the Executive Council,



Irene, Yee Choy Peng
President



Dr Zahabar Ali
Honorary Treasurer

Singapore, **28 AUG 2017**

Fiducia LLP

Public Accountants and
Chartered Accountants of Singapore

71 Ubi Crescent,
Excalibur Centre, #08-01
Singapore 408571.
T: (65) 6846.8376
F: (65) 6725.8161

Independent auditor's report to the members of:

THE SINGAPORE ASSOCIATION FOR THE DEAF

[UEN. S62SS0061C]

[IPC No. IPC000444]

[Registered under the Societies Act (Chapter 311)
in Singapore]

Report on the Audit of the Financial Statements

Opinion

We have audited the accompanying financial statements of The Singapore Association For the Deaf (the "Association"), which comprise the statement of financial position as at 31 March 2017, statement of financial activities, statement of changes in funds and statement of cash flows for the year then ended, and the notes to the financial statements, including a summary of significant accounting policies.

In our opinion, the accompanying financial statements are properly drawn up in accordance with the provisions of the Societies Act, Chapter 311 (the "Societies Act"), the Charities Act, Chapter 37 and other relevant regulations (the "Charities Act and Regulations") and Financial Reporting Standards in Singapore ("FRSs") so as to present fairly, in all material respects, the state of affairs of the Association as at 31 March 2017 and the results, changes in funds and cash flows of the Association for the year ended on that date.

Basis for Opinion

We conducted our audit in accordance with Singapore Standards on Auditing ("SSAs"). Our responsibilities under those standards are further described in the Auditor's Responsibilities for the Audit of the Financial Statements section of our report. We are independent of the Association in accordance with the Accounting and Corporate Regulatory Authority ("ACRA") Code of Professional Conduct and Ethics for Public Accountants and Accounting Entities ("ACRA Code") together with the ethical requirements that are relevant to our audit of the financial statements in Singapore, and we have fulfilled our other ethical responsibilities in accordance with these requirements and the ACRA Code. We believe that the audit evidence we have obtained is sufficient and appropriate to provide a basis for our opinion.

Other Information

Management is responsible for the other information. The other information comprises the information included in the annual report, but does not include the financial statements and our auditor's report thereon.

Our opinion on the financial statements does not cover the other information and we do not and will not express any form of assurance conclusion thereon.

The Singapore Association for the Deaf
[UEN. S62SS0061C]
[IPC No. IPC000444]

*Audited Financial Statements
Financial Year Ended 31 March 2017*

Fiducia LLP

Public Accountants and
Chartered Accountants of Singapore

71 Ubi Crescent,
Excalibur Centre, #08-01
Singapore 408571.
T: (65) 6846.8376
F: (65) 6725.8161

(CONT'D)

Independent auditor's report to the members of:

THE SINGAPORE ASSOCIATION FOR THE DEAF
[UEN. S62SS0061C]
[IPC No. IPC000444]

[Registered under the Societies Act (Chapter 311)
in Singapore]

Other Information (Cont'd)

In connection with our audit of the financial statements, our responsibility is to read the other information identified above and, in doing so, consider whether the other information is materially inconsistent with the financial statements or our knowledge obtained in the audit, or otherwise appears to be materially misstated. If, based on the work we have performed on the other information that we obtained prior to the date of this auditor's report, we conclude that there is a material misstatement of this other information, we are required to report that fact. We have nothing to report in this regard.

Responsibilities of Management and Those Charged with Governance for the Financial Statements

Management is responsible for the preparation and fair presentation of the financial statements in accordance with the provisions of the Societies Act, the Charities Act and Regulations and FRSs, and for such internal control as management determines is necessary to enable the preparation of financial statements that are free from material misstatement, whether due to fraud or error.

In preparing the financial statements, management is responsible for assessing the Association's ability to continue as a going concern, disclosing, as applicable, matters related to going concern and using the going concern basis of accounting unless management either intends to liquidate the Association or to cease operations, or has no realistic alternative but to do so.

Those charged with governance are responsible for overseeing the Association's financial reporting process.

Auditor's Responsibilities for the Audit of the Financial Statements

Our objectives are to obtain reasonable assurance about whether the financial statements as a whole are free from material misstatement, whether due to fraud or error, and to issue an auditor's report that includes our opinion. Reasonable assurance is a high level of assurance, but is not a guarantee that an audit conducted in accordance with SSAs will always detect a material misstatement when it exists. Misstatements can arise from fraud or error and are considered material if, individually or in the aggregate, they could reasonably be expected to influence the economic decisions of users taken on the basis of these financial statements.

Fiducia LLP

Public Accountants and
Chartered Accountants of Singapore

71 Ubi Crescent,
Excalibur Centre, #08-01
Singapore 408571.
T: (65) 6846.8376
F: (65) 6725.8161

(CONT'D)

Independent auditor's report to the members of:

THE SINGAPORE ASSOCIATION FOR THE DEAF

[UEN. S62SS0061C]

[IPC No. IPC000444]

[Registered under the Societies Act (Chapter 311)
in Singapore]

Auditor's Responsibilities for the Audit of the Financial Statements (Cont'd)

As part of an audit in accordance with SSAs, we exercise professional judgement and maintain professional scepticism throughout the audit. We also:

- Identify and assess the risks of material misstatement of the financial statements, whether due to fraud or error, design and perform audit procedures responsive to those risks, and obtain audit evidence that is sufficient and appropriate to provide a basis for our opinion. The risk of not detecting a material misstatement resulting from fraud is higher than for one resulting from error, as fraud may involve collusion, forgery, intentional omissions, misrepresentations, or the override of internal control.
- Obtain an understanding of internal control relevant to the audit in order to design audit procedures that are appropriate in the circumstances, but not for the purpose of expressing an opinion on the effectiveness of the Association's internal control.
- Evaluate the appropriateness of accounting policies used and the reasonableness of accounting estimates and related disclosures made by management.
- Conclude on the appropriateness of management's use of the going concern basis of accounting and, based on the audit evidence obtained, whether a material uncertainty exists related to events or conditions that may cast significant doubt on the Association's ability to continue as a going concern. If we conclude that a material uncertainty exists, we are required to draw attention in our auditor's report to the related disclosures in the financial statements or, if such disclosures are inadequate, to modify our opinion. Our conclusions are based on the audit evidence obtained up to the date of our auditor's report. However, future events or conditions may cause the Association to cease to continue as a going concern.
- Evaluate the overall presentation, structure and content of the financial statements, including the disclosures, and whether the financial statements represent the underlying transactions and events in a manner that achieves fair presentation.

We communicate with those charged with governance regarding, among other matters, the planned scope and timing of the audit and significant audit findings, including any significant deficiencies in internal control that we identify during our audit.

The Singapore Association for the Deaf
[UEN. S62SS0061C]
[IPC No. IPC000444]

*Audited Financial Statements
Financial Year Ended 31 March 2017*

Fiducia LLP

Public Accountants and
Chartered Accountants of Singapore

71 Ubi Crescent,
Excalibur Centre, #08-01
Singapore 408571.
T: (65) 6846.8376
F: (65) 6725.8161

(CONT'D)

Independent auditor's report to the members of:

THE SINGAPORE ASSOCIATION FOR THE DEAF
[UEN. S62SS0061C]
[IPC No. IPC000444]

[Registered under the Societies Act (Chapter 311) in the
Republic of Singapore]

Report on Other Legal and Regulatory Requirements

In our opinion,

- (a) the accounting and other records required to be kept by the Association have been properly kept in accordance with the provisions of the Societies Regulations enacted under the Societies Act, the Charities Act and Regulations; and
- (b) the fund raising appeals held during the year ended 31 March 2017 has been carried out in accordance with Regulation 6 of the Societies Regulations issued under the Societies Act and proper accounts and other records have been kept of the fund raising appeals.

During the course of our audit, nothing has come to our attention that caused us to believe that during the year:

- (a) the Association has not used the donation moneys in accordance with its objectives as required under Regulation 11 of the Charities (Institutions of a Public Character) Regulations; and
- (b) the Association has not complied with the requirements of Regulation 15 of the Charities (Institutions of a Public Character) Regulations.



Fiducia LLP
Public Accountants and
Chartered Accountants
Singapore, **28 AUG 2017**

Partner-in-charge: Lee Choon Keat
PAB No.: 01721

STATEMENT OF FINANCIAL POSITION AS AT 31 MARCH 2017

	Note	2017 S\$	2016 S\$
ASSETS			
Current assets			
Cash and cash equivalents	4	5,623,332	5,960,513
Other receivables	5	370,922	391,425
Inventories		16,967	19,632
		<u>6,011,221</u>	<u>6,371,570</u>
Non-current assets			
Property, plant and equipment	6	<u>159,633</u>	<u>83,226</u>
Total assets		<u>6,170,854</u>	<u>6,454,796</u>
LIABILITIES			
Current liabilities			
Accruals and other payables	7	<u>98,927</u>	<u>156,326</u>
Total liabilities		<u>98,927</u>	<u>156,326</u>
NET ASSETS		<u>6,071,927</u>	<u>6,298,470</u>
FUNDS			
Unrestricted funds			
Accumulated funds			
– SADeaf		1,206,335	1,368,391
– PITCH		-	61,375
	8	<u>1,206,335</u>	<u>1,429,766</u>
Designated funds	9	<u>1,453,431</u>	<u>1,464,814</u>
		<u>2,659,766</u>	<u>2,894,580</u>
Restricted funds			
Accumulated funds			
– ISS		968,764	691,399
– DAS		-	-
– Care and share		58,734	508,230
– Community Services		-	-
	8	<u>1,027,498</u>	<u>1,199,629</u>
Designated funds	9	<u>2,384,663</u>	<u>2,204,261</u>
		<u>3,412,161</u>	<u>3,403,890</u>
Total funds		<u>6,071,927</u>	<u>6,298,470</u>

The accompanying notes form an integral part of these financial statements.

STATEMENT OF FINANCIAL ACTIVITIES FOR THE FINANCIAL YEAR ENDED 31 MARCH 2017

	Note	Unrestricted funds			Restricted funds			2017 Total funds S\$	2016 Total funds S\$
		Accumulated funds S\$	Special activities fund S\$	Other funds S\$	Accumulated funds S\$	Special activities fund S\$	Other funds S\$		
INCOME									
Income from generated funds									
Voluntary income									
- Donations		206,617	12,981	-	105,300	-	-	324,898	559,472
- Grants for rental of land		415,618	-	-	-	-	-	415,618	415,621
- Other grants and sponsorships		30,942	-	-	50,216	145,871	-	227,029	305,877
Activities for generating funds									
- Fundraising income	10	150,667	-	-	20,000	-	-	170,667	293,905
- Collections from events		-	2,447	-	69,303	-	-	71,750	22,796
Fixed deposit income									
- Interest		35,801	-	-	-	-	-	35,801	42,505
Refund									
		839,645	15,428	-	244,819	145,871	-	1,245,763	1,640,176
Income from charitable activities									
Grant from NCSS /									
Community Chest		36,139	-	-	315,356	-	-	351,495	350,049
Grant refund to NCSS (PITCH)		(61,375)	-	-	-	-	-	(61,375)	0
Grant from MSF		-	-	-	331,027	-	-	331,027	296,130
Grant from MOE		-	-	-	444,577	-	-	444,577	381,070
Grant from TOTE Board		43,806	-	-	401,060	-	-	444,866	360,680
Care and share grant		-	-	-	-	-	-	-	483,563
Members subscription		6,641	-	-	-	-	-	6,641	5,689
Programme income		-	-	-	170,706	-	-	170,706	157,116
Interpretation fees collected		-	-	-	133,215	-	-	133,215	88,532
Sign language books		-	-	-	2,405	-	-	2,405	10,132
Sales of assistive devices		-	-	-	94,113	-	-	94,113	98,212
		25,211	-	-	1,892,459	-	-	1,917,670	2,231,173

STATEMENT OF FINANCIAL ACTIVITIES FOR THE FINANCIAL YEAR ENDED 31 MARCH 2017 (CONT'D)

	Note	Unrestricted funds			Restricted funds			2017 Total funds S\$	2016 Total funds S\$
		Accumulated funds S\$	Special activities fund S\$	Other funds S\$	Accumulated funds S\$	Special activities fund S\$	Other funds S\$		
INCOME (CONT'D)									
Other income									
HQ allocation		30,000	-	-	-	-	-	30,000	90,000
Welfare		-	-	-	80,793	-	-	80,793	124,667
Senior mobility and enabling fund		-	-	-	129,207	-	-	129,207	182,218
Miscellaneous income		1,240	-	-	1,663	-	-	2,903	1,648
		31,240	-	-	211,663	-	-	242,903	398,533
Total income		896,096	15,428	-	2,348,941	145,871	-	3,406,336	4,269,882
EXPENDITURE									
Cost of generating funds									
Fundraising events	10	11,233	-	-	-	-	-	11,233	12,834
Charitable activities									
Annual events		-	26,811	-	397,341	1,667	-	425,819	177,338
Professional fees and services		7,843	-	-	92,762	-	-	100,605	106,832
Purchase of assistive devices		-	-	-	202,452	-	520	202,972	221,109
Teaching material		-	-	-	2,788	-	-	2,788	3,662
Volunteer expenses		3,728	-	-	651	-	-	4,379	3,778
		11,571	26,811	-	695,994	1,667	520	736,563	512,719

STATEMENT OF FINANCIAL ACTIVITIES FOR THE FINANCIAL YEAR ENDED 31 MARCH 2017 (CONT'D)

	Note	Unrestricted funds			Restricted funds			2017 Total funds S\$	2016 Total funds S\$
		Accumulated funds S\$	Special activities fund S\$	Other funds S\$	Accumulated funds S\$	Special activities fund S\$	Other funds S\$		
EXPENDITURE (CONT'D)									
Governance and other administrative costs									
Audit fees		6,564	-	-	5,196	-	-	11,760	7,704
Communications		6,055	-	-	23,028	-	-	29,083	36,485
Depreciation - general	6	19,323	-	-	10,845	-	-	30,168	18,242
Depreciation - care and share	6	-	-	-	9,999	-	-	9,999	9,396
HQ allocation		-	-	-	30,000	-	-	30,000	30,000
Insurance		2,156	-	-	7,662	-	-	9,818	9,601
Miscellaneous		4,270	-	-	2,473	-	-	6,743	6,305
Publication and advertisements		3,342	-	-	12,682	-	-	16,024	21,087
Rental for office equipment		1,514	-	-	5,101	-	-	6,615	6,541
Rental of land		415,618	-	-	-	-	-	415,618	415,618
Staff CPF contributions		60,609	-	-	244,770	-	-	305,379	292,841
Staff salaries		406,871	-	-	1,491,053	-	-	1,897,924	1,874,437
Staff welfare and training		5,723	-	-	25,074	-	-	30,797	36,004
Supplies and materials		8,341	-	-	12,826	-	-	21,167	18,256
Transport		1,677	-	-	25,633	-	-	27,310	28,261
Upkeep of building and equipment		5,637	-	-	20,854	-	-	26,491	17,813
Utilities		2,042	-	-	8,145	-	-	10,187	11,386
		949,742	-	-	1,935,341	-	-	2,885,083	2,839,977
Total expenditure		972,546	26,811	-	2,631,335	1,667	520	3,632,879	3,365,530
(Deficit) / Surplus for the financial year		(76,450)	(11,383)	-	(282,394)	144,204	(520)	(226,543)	904,352

STATEMENT OF FINANCIAL ACTIVITIES FOR THE FINANCIAL YEAR ENDED 31 MARCH 2017 (CONT'D)

	Unrestricted funds			Restricted funds			2017 Total funds S\$	2016 Total funds S\$
	Accumulated funds S\$	Special activities fund S\$	Other funds S\$	Accumulated funds S\$	Special activities fund S\$	Other funds S\$		
(DEFICIT) / SURPLUS FOR THE FINANCIAL YEAR	(76,450)	(11,383)	-	(282,394)	144,204	(520)	(226,543)	904,352
FUNDS TRANSFERRED (OUT) / IN	(146,981)	-	-	110,263	-	36,718	-	-
NET MOVEMENT IN FUNDS	(223,431)	(11,383)	-	(172,131)	144,204	36,198	(226,543)	904,352
FUNDS BROUGHT FORWARD	1,429,766	244,349	1,220,465	1,199,629	1,023,592	1,180,669	6,298,470	5,394,118
FUNDS CARRIED FORWARD	1,206,335	232,966	1,220,465	1,027,498	1,167,796	1,216,867	6,071,927	6,298,470

The accompanying notes form an integral part of these financial statements.

The Singapore Association for the Deaf
[UEN. S62SS0061C]
[IPC No. IPC0000444]

Audited Financial Statements
Financial Year Ended 31 March 2017

STATEMENT OF CHANGES IN FUNDS FOR THE FINANCIAL YEAR ENDED 31 MARCH 2017

2017	Note	Balance at beginning of year S\$	Surplus / (Deficit) for the year S\$	Transferred in / (out) S\$	Balance at end of year S\$
UNRESTRICTED FUNDS					
Accumulated funds	8	1,429,766	(76,450)	(146,981)	1,206,335
Designated funds					
Special activities fund	9.1	244,349	(11,383)	-	232,966
Special event fund	9.2	900,000	-	-	900,000
General fund	9.3	320,465	-	-	320,465
		1,464,814	(11,383)	-	1,453,431
RESTRICTED FUNDS	8	1,199,629	(282,394)	110,263	1,027,498
Designated funds					
Social group of the Deaf fund	9.4	73,393	-	(528)	72,865
MILK fund	9.5	3,479	(520)	-	2,959
MVS fund	9.6	354,493	-	-	354,493
SADeaf hearing care centre fund	9.7	657,827	-	37,246	695,073
Special activities fund	9.8	1,023,592	144,204	-	1,167,796
Tertiary education fund	9.9	52,430	-	-	52,430
Welfare fund	9.10	39,047	-	-	39,047
		2,204,261	143,684	36,718	2,384,663
		6,298,470	(226,543)	-	6,071,927

STATEMENT OF CHANGES IN FUNDS FOR THE FINANCIAL YEAR ENDED 31 MARCH 2017 (CONT'D)

2016	Note	Balance at beginning of year S\$	Surplus / (Deficit) for the year S\$	Transferred in / (out) S\$	Balance at end of year S\$
UNRESTRICTED FUNDS					
Accumulated funds	8	1,227,982	372,135	(170,351)	1,429,766
Designated funds					
Special activities fund	9.1	1,101,155	6,257	(863,063)	244,349
Special event fund	9.2	900,000	-	-	900,000
General fund	9.3	320,465	-	-	320,465
		2,321,620	6,257	(863,063)	1,464,814
RESTRICTED FUNDS					
Accumulated funds	8	786,229	365,431	47,969	1,199,629
Designated funds					
Social group of the Deaf fund	9.4	75,396	-	(2,003)	73,393
MILK fund	9.5	3,479	-	-	3,479
MVS fund	9.6	354,493	-	-	354,493
SADeaf hearing care centre fund	9.7	533,442	-	124,385	657,827
Special activities fund	9.8	-	160,529	863,063	1,023,592
Tertiary education fund	9.9	52,430	-	-	52,430
Welfare fund	9.10	39,047	-	-	39,047
		1,058,287	160,529	985,445	2,204,261
		5,394,118	904,352	-	6,298,470

The accompanying notes form an integral part of these financial statements.

The Singapore Association for the Deaf
[UEN. S62SS0061C]
[IPC No. IPC000444]

Audited Financial Statements
Financial Year Ended 31 March 2017

STATEMENT OF CASH FLOWS FOR THE FINANCIAL YEAR ENDED 31 MARCH 2017

	Note	2017 S\$	2016 S\$
Cash flows from operating activities			
(Deficit) / Surplus for the financial year		(226,543)	904,352
Adjustments for :			
Depreciation – general	6	30,168	18,242
Depreciation – care and share	6	9,999	9,396
Interest received		(35,801)	(42,505)
Operating cash flow before working capital changes		(222,177)	889,485
Changes in operating assets and liabilities:			
Other receivables		64,145	(87,123)
Inventories		2,665	(19,632)
Accruals and other payables		(57,399)	122,099
Net cash (used in) / generated from operating activities		<u>(212,766)</u>	<u>904,829</u>
Cash flows from investing activities			
Interest received		35,801	42,505
Purchases of property, plant and equipment	6	(116,574)	(14,093)
Net cash (used in) / provided by investing activities		<u>(80,773)</u>	<u>28,412</u>
Cash flows from financing activities			
(Repayment to)/ Advance from related parties		(43,642)	15,692
Net cash (used in) / provided by financing activities		<u>(43,642)</u>	<u>15,692</u>
Net (decrease)/ increase in cash and cash equivalents		(337,181)	948,933
Cash and cash equivalents at beginning of financial year		<u>5,960,513</u>	<u>5,011,580</u>
Cash and cash equivalents at end of financial year	4	<u><u>5,623,332</u></u>	<u><u>5,960,513</u></u>

The accompanying notes form an integral part of these financial statements.

NOTES TO THE FINANCIAL STATEMENTS FOR THE FINANCIAL YEAR ENDED 31 MARCH 2017

These notes form an integral part of and should be read in conjunction with the accompanying financial statements.

1. General information

The Singapore Association for the Deaf ("the Association") is registered with the Registry of Societies under Societies Act (Chapter 311) in Singapore on 29 March 1962. The Association's registered address and its principal place of business is at 227, Mountbatten Road, Singapore 397998.

The principal activities of the Association are to promote and manage all aspects of the welfare of the Deaf (including those with hearing disabilities and who are hard of hearing, hereinafter referred to as the Deaf) in Singapore, to develop, provide and maintain welfare, educational and training services for the Deaf in Singapore, to advocate for the full participation of the Deaf in our Association and to do any or all such other things as are incidental or conducive to the attainment of the above objects, the Association shall: (i) receive gifts in property or in kind, whether subject to any special trust or not, for any one or more of the objectives of the Association; (ii) raise funds in aid of the Deaf in such manner as the Association may think fit, including the sale of hearing aids, accessories or other things; (iii) establish, support and aid in the setting up of any other association formed for or any of the objectives of the Association; (iv) purchase, develop, maintain, lease or otherwise acquire land or buildings of whatever kind or any interest in the same and to sell, convey, assign, mortgage, pledge or otherwise dispose of any land or buildings for the purpose of the Association.

The Association is a charity registered under the Charities Act since 30 May 1984. It has been granted Institutions of a Public Character ("IPC") status for the period from 1 April 2017 to 30 June 2019.

2. Significant accounting policies

2.1 Basis of preparation

The financial statements have been prepared in accordance with Singapore Financial Reporting Standards ("FRSs") and the disclosure requirements of the Societies Act (Chapter 311) and Charities Act (Chapter 37). The financial statements have been prepared under the historical cost convention, except as disclosed in the accounting policies below.

These financial statements are presented in Singapore Dollar (S\$), which is the Association's functional currency.

The preparation of these financial statements in conformity with FRSs requires management to exercise its judgement in the process of applying the Association's accounting policies. It also requires the use of certain critical accounting estimates and assumptions that affect the reported amounts of assets and liabilities and disclosure of contingent assets and liabilities at the date of the financial statements, and the reported amounts of income and expenditure during the financial year. Although these estimates are based on an Executive Council's best knowledge of current events and actions, actual results may ultimately differ from those estimates.

The areas involving a higher degree of judgement or complexity, or areas where assumptions and estimates are significant to the financial statements are disclosed in Note 3.

2. Significant accounting policies (Cont'd)**2.1 Basis of preparation (Cont'd)****2.1.1 Interpretations and amendments to published standards effective in 2016**

Association has adopted the new or revised FRSs and Interpretations to FRSs (INT FRSs) that are mandatory for application from that date. Changes to Association's accounting policies have been made as required, in accordance with the relevant transitional provisions in the respective FRSs and INT FRSs. The following are the FRSs and INT FRSs that are relevant to the Association:

<u>FRS</u>	<u>Effective date</u>	<u>Title</u>
FRS 1	1.1.2016	Presentation of financial statements (Disclosure initiative)
FRS 16 and 38	1.1.2016	Clarification of acceptable methods of depreciation and amortisation
FRS 19	1.1.2016	Employee benefits (Determining the discount rates for post-employment benefit obligations)

The adoption of these new or amended FRSs and INT FRSs did not result in substantial changes to the accounting policies of Association and had no material effect on the amounts reported for the current or prior financial year.

2.1.2 Standards issued but not yet effective

Association did not early adopt the following relevant new/revised FRSs, INT FRSs and amendments to FRSs that were issued at the date of authorisation of these financial statements but which are not yet effective until future periods:

<u>FRS</u>	<u>Effective date</u>	<u>Title</u>
FRS 109	1.1.2018	Financial instruments
FRS 115	1.1.2018	Revenue from Contracts with Customers
FRS 116	1.1.2019	Leases

Management believe that the adoption of the revised standards and interpretations will have no material impact on the financial statements in the period of initial application.

2.2 Revenue recognition

Revenue comprises the fair value of the consideration received or receivable for the services rendered in the ordinary course of the Association's activities. Revenue is recognised as follows:

2.2.1 Government grants

Government grants are recognised as income in the financial statements over the periods necessary to match them with the related costs, which they are intended to compensate on a systematic basis. The Government funding for capital expenditure are amortised as income over the useful lives of the assets they fund.

2. Significant accounting policies (Cont'd)

2.2 Revenue recognition (Cont'd)

Revenue comprises the fair value of the consideration received or receivable for the services rendered in the ordinary course of the Association's activities. Revenue is recognised as follows:

2.2.2 Donations

Unrestricted donations are reported as income. The timing of income recognition is governed by the donor's intent. If the donor is silent, the donation is recognised as income in the year made. The timing of income recognition for restricted donations is the same as for unrestricted donations.

2.2.3 Rendering of services

When the outcome of a transaction involving the rendering of services can be estimated reliably, revenue associated with the transaction is recognised by reference to the stage of completion of the transaction at the reporting date.

2.2.4 Other income

Other income is recognised when received.

2.3 Expenditure recognition

All expenditure is accounted for on accrual basis, aggregated under the respective areas. Direct costs are attributed to the activity where possible. Where costs are not wholly attributable to an activity, they are apportioned on a basis consistent with the use of resources.

2.3.1 Cost of charitable activities

Cost of charitable activities comprises all directly attributable costs incurred in the pursuit of the charitable objects of the Association.

2.3.2 Governance and administrative costs

Governance costs include the costs of governance arrangement, which relate to the general running of the Association, providing governance infrastructure and ensuring public accountability. These costs include costs related to constitutional and statutory requirements and an apportionment of overhead and shared costs.

2.4 Property, plant and equipment

2.4.1 Measurement

All property, plant and equipment are initially recognised at cost and subsequently carried at cost less accumulated depreciation and accumulated impairment losses.

The cost of an item of property, plant and equipment initially recognised includes its purchase price and any costs that are directly attributable to bringing the asset to the location and condition necessary for it to be capable of operating in the manner intended by management.

2. Significant accounting policies (Cont'd)

2.4 Property, plant and equipment (Cont'd)

2.4.2 Depreciation

Depreciation on property, plant and equipment is calculated using the straight-line method to allocate their depreciable amounts over their estimated useful lives. The estimated useful lives are as follows:

	Useful life
Building renovation	5 years
Furniture and equipment	5 years

Fully depreciated assets are retained in the financial statements until they are no longer in use.

The residual values and useful lives of property, plant and equipment are reviewed, and adjusted as appropriate, at each reporting date. The effects of any revision of the residual values and useful lives are included in the statement of financial activities for the financial year in which the changes arise.

2.4.3 Subsequent expenditure

Subsequent expenditure relating to property, plant and equipment that has already been recognised is added to the carrying amount of the asset only when it is probable that future economic benefits associated with the item will flow to the Association and the cost of the item can be measured reliably. Other subsequent expenditure is recognised as repair and maintenance expenses in the statement of financial activities during the financial year in which it is incurred.

2.4.4 Disposal

On disposal of an item of property, plant and equipment, the difference between the net disposals proceeds and its carrying amount is taken to the statement of financial activities.

2.5 Inventories

Inventories are stated at the lower of cost and net realisable value. Cost comprises purchase cost of the inventories and those costs that have been incurred in bringing the inventories to their present location and condition. Cost is calculated using the first-in-first-out basis. Net realisable value represents the estimated selling price less all estimated cost to be incurred in marketing, selling and distribution.

2. Significant accounting policies (Cont'd)

2.6 Impairment of non-financial assets

Property, plant and equipment are reviewed for impairment whenever there is any indication that these assets may be impaired. If any such indication exists, the recoverable amount (i.e. the higher of the fair value less cost to sell and value in use) of the assets is estimated to determine the amount of impairment loss.

For the purpose of impairment testing of the assets, recoverable amount is determined on an individual asset basis unless the asset does not generate cash flows that are largely independent of those from other assets. If this is the case, recoverable amount is determined for the cash-generating unit (CGU) to which the asset belongs.

If the recoverable amount of the asset (or CGU) is estimated to be less than its carrying amount, the carrying amount of the asset (or CGU) is reduced to its recoverable amount. The impairment loss is recognised in the statement of financial activities.

An impairment loss for an asset is reversed if; there has been a change in the estimates used to determine the assets' recoverable amount since the last impairment loss was recognised. The carrying amount of an asset is increased to its revised recoverable amount, provided that this amount does not exceed the carrying amount that would have been determined (net of depreciation) had no impairment loss been recognised for the asset in prior years. A reversal of impairment loss for an asset is recognised in the statement of financial activities.

2.7 Financial assets

2.7.1 Classification

The Association classifies its financial assets as loans and receivables. The classification depends on the purpose for which the assets were acquired. Management determines the classification of its financial assets at initial recognition and re-evaluates this designation at every reporting date.

Loans and receivables are non-derivative financial assets with fixed or determinable payments that are not quoted in an active market. They are included in current assets, except those maturing later than 12 months after the reporting date, which are classified as non-current assets. Loans and receivables are classified within "Other receivables" and "Cash and cash equivalents" on the statement of financial position.

2.7.2 Recognition and derecognition

Financial assets are derecognised when the rights to receive cash flows from the financial assets have expired or have been transferred and the Association has transferred substantially all risks and rewards of ownership.

2.7.3 Initial measurement

Financial assets are initially recognised at fair value plus transaction costs

2.7.4 Subsequent measurement

Loans and receivables are subsequently carried at amortised cost using the effective interest method.

2. Significant accounting policies (Cont'd)

2.7 Financial assets (Cont'd)

2.7.5 Impairment

The Association assesses at each reporting date whether there is objective evidence that a financial asset or group of financial assets is impaired and recognises an allowance for impairment when such evidence exists.

Significant financial difficulties of the receivables, probability that the debtor will enter bankruptcy or financial reorganisation, and default or delinquency in payments is considered indicators that the receivable is impaired.

An allowance for impairment of loans and receivables including trade and other receivables is recognised when there is objective evidence that the Association will not be able to collect all amounts due according to the original terms of the receivables.

The amount of the allowance is the difference between the asset's carrying amount and the present value of estimated future cash flows, discounted at the original effective interest rate. When the amount becomes uncollectible, it is written off against the allowance account. Subsequent recoveries of amounts previously written off are recognised against the same line item in statement of financial activities.

2.8 Cash and cash equivalents

Cash and cash equivalents comprise cash on hand, demand deposits and, short-term and highly liquid investments that are readily convertible to known amounts of cash which are subject to an insignificant risk of changes in value.

2.9 Other receivables

Other receivables are initially recognised at fair value, and subsequently carried at amortised cost, using the effective interest method.

2.10 Financial liabilities

Financial liabilities are recognised when the Association becomes a party to the contractual agreements of the instrument and are classified according to the substance of the contractual arrangements entered into. All interest related charges are recognised in the statement of comprehensive income. Financial liabilities include "Accruals and other payables" on the statement of financial position.

Financial liabilities are derecognised when the obligations under the liability is discharged, cancelled or expires. When existing financial liabilities are replaced by another from the same lender on substantially different terms of an existing liability are substantially modified, such an exchange or modification is treated as a derecognition of the original liability and the recognition of a new liability, and the difference in respective carrying amounts is recognised in the statement of financial activities.

2. Significant accounting policies (Cont'd)

2.11 Accruals and other payables

Accruals and other payables are initially recognised at fair value, and subsequently carried at amortised cost, using the effective interest method.

2.12 Provisions for other liabilities and charges

Provisions for other liabilities and charges are recognised when the Association has a present legal or constructive obligation as a result of past events, it is more likely than not that an outflow of resources will be required to settle the obligation and the amount has been reliably estimated.

2.13 Currency translation

Transactions denominated in a currency other than Singapore Dollar ("foreign currency") are translated into Singapore Dollar using the exchange rates prevailing at the dates of the transactions. Currency translation gains and losses resulting from the settlement of such transactions and from the translation at the closing rate at the reporting date of monetary assets and liabilities denominated in foreign currencies are recognised in the statement of financial activities.

2.14 Operating leases

Leases of assets in which a significant portion of the risks and rewards of ownership are retained by the lessor are classified as operating leases. Payments made under operating leases (net of any incentives received from the lessor) are taken to the statement of comprehensive financial activities on a straight-line basis over the period of the lease. When an operating lease is terminated before the lease period has expired, any payment required to be made to the lessor by way of penalty is recognised as an expense in the period in which termination takes place.

Rental on operating lease is charged to the statement of financial activities. Contingent rents are recognised as an expense in the statement of financial activities in the financial year in which they are incurred.

2.15 Employee compensation

2.15.1 Defined contribution plans

Defined contribution plans are post-employment benefit plans under which the Association pays fixed contributions into separate entities such as the Central Provident Fund ("CPF"), on a mandatory, contractual or voluntary basis. The Association has no further payment obligations once the contributions have been paid. The Association's contribution to defined contribution plans are recognised as employee compensation expense when they are due.

2.15.2 Employee leaves entitlement

Employee entitlements to annual leave are recognised when they accrue to employees. A provision is made for the estimated liability for annual leave as a result of services rendered by employees up to the reporting date.

2. Significant accounting policies (Cont'd)

2.16 Related parties

A related party is defined as follows:

- (a) A person or a close member of that person's family is related to the Association if that person:
 - (i) Has control or joint control over the Association;
 - (ii) Has significant influence over the Association; or
 - (iii) Is a member of the key management personnel of the Association or of a parent of the Association;
- (b) An entity is related to the Association if any of the following conditions applies:
 - (i) The entity and the Association are members of the same group (which means that each parent, subsidiary and fellow subsidiary is related to the others;
 - (ii) One entity is an associate or joint venture of the other entity (or an associate or joint venture of a member of a group of which the other entity is a member);
 - (iii) Both entities are joint ventures of the same third party;
 - (iv) One entity is a joint venture of a third entity and the other entity is an associate of the third entity;
 - (v) The entity is a post-employment benefit plan for the benefit of employees of either the Association or an entity related to the Association. If the Association is itself such a plan, the sponsoring employers are also related to the Association;
 - (vi) The entity is controlled or jointly controlled by a person identified in (a);
 - (vii) A person identified in (a)(i) has significant influence over the entity or is a member of the key management personnel of the entity (or of a parent of the entity)
 - (viii) The entity, or any member of a group of which it is a part, provides key management personnel services to the reporting entity or to the parent of the reporting entity.

3. Critical accounting estimates, assumptions and judgements

Estimates, assumptions and judgements are continually evaluated and are based on historical experience and other factors, including expectations of future events that are believed to be reasonable under the circumstances.

3. Critical accounting estimates, assumptions and judgements (Cont'd)

3.1 Critical accounting estimates and assumptions

The Association makes estimates and assumptions concerning the future. The resulting accounting estimates will, by definition, seldom equal the related actual results. The estimates and assumptions that have a significant risk of causing a material adjustment to the carrying amounts of assets and liabilities within the next financial year are discussed below.

3.1.1 Estimated useful lives of property, plant and equipment

The Association reviews annually the estimated useful lives of property, plant and equipment based on factors such as operating plans and strategies, expected level of usage and future technological developments. It is possible that future results of operations could be materially affected by changes in these estimates brought about by changes in the factors mentioned.

3.2 Critical judgements in applying the entity's accounting policies

The key assumptions concerning the future and other key sources of estimation uncertainty at the reporting date, that have a significant risk of causing a material adjustment to the carrying amounts of assets and liabilities within the next financial year, are discussed below.

3.2.1 Allowance for impairment of receivables

The Association reviews the adequacy of allowance for impairment of receivables at each closing by reference to the ageing analysis of receivables, and evaluates the risks of collection according to the credit standing and collection history of individual client. If there are indications that the financial position of a client has deteriorated resulting in an adverse assessment of his risk profile, an appropriate amount of allowance will be provided.

3.2.2 Impairment of property, plant and equipment

Property, plant and equipment are reviewed for impairment whenever there is any indication that the assets are impaired. If any such indication exists, the recoverable amount (i.e. higher of the fair value less cost to sell and value in use) of the assets is estimated to determine the impairment loss. The key assumptions for the value in use calculation are those regarding the growth rates, and expected change to income and expenditure during the year and a suitable discount rate.

3.2.3 Allowances for inventories

Management determines whether an allowance is required for stock obsolescence or slow-moving stock or for any shortfall in net realisable value of inventories by reviewing the inventory listing on a periodic basis.

The Singapore Association for the Deaf
[UEN. S62SS0061C]
[IPC No. IPC000444]

Audited Financial Statements
Financial Year Ended 31 March 2017

4. Cash and cash equivalents

	2017 S\$	2016 S\$
Cash in hand	200	200
Cash at banks	4,623,132	2,682,582
Fixed deposits	<u>1,000,000</u>	<u>3,277,731</u>
	<u>5,623,332</u>	<u>5,960,513</u>

Fixed deposits have maturity of 6 to 12 months (2016: 6 to 13 months) and have interest rates ranging from 1.21% to 1.36% (2016: 1.60% to 1.90%) per annum.

Long-term fixed deposits are included as cash and cash equivalents as these can be readily converted into cash without incurring significant penalty.

At end of the financial year, the tenures of the fixed deposits are as follows:

	2017 S\$	2016 S\$
Within one year	1,000,000	2,271,458
More than one year and less than two years	<u>-</u>	<u>1,006,273</u>
	<u>1,000,000</u>	<u>3,277,731</u>

At the reporting date, the carrying amounts of cash and cash equivalents approximated their fair value.

5. Other receivables

	2017 S\$	2016 S\$
Amounts due from related parties		
– The Singapore School for the Deaf (SSD)	73,400	63,232
– Mountbatten Vocational School (MVS)	<u>120,780</u>	<u>87,306</u>
	194,180	150,538
Sundry debtors	63,205	105,773
Deposits	97,667	102,361
Prepayments	<u>15,870</u>	<u>32,753</u>
	<u>370,922</u>	<u>391,425</u>

The amounts due from related parties are unsecured, non-interest bearing and are collectible on demand.

At the reporting date, the carrying amounts of other receivables approximated their fair values.

6. Property, plant and equipment

2017	Balance b/f S\$	Additions S\$	Written off S\$	Balance c/f S\$
Cost				
Building renovation – ISS	4,840	-	-	4,840
Building renovation – SADeaf	837,192	76,900	-	914,092
Furniture and equipment – SADeaf	228,332	19,017	(37,113)	210,236
Furniture and equipment – DAS	-	10,547	-	10,547
Furniture and equipment – ISS	65,095	2,878	-	67,973
Furniture and equipment – CS	-	1,102	-	1,102
Furniture and equipment – HCC	26,140	6,130	-	32,270
	<u>1,161,599</u>	<u>116,574</u>	<u>(37,113)</u>	<u>1,241,060</u>
	Balance b/f S\$	Depreciation charge S\$	Written back/ off S\$	Balance c/f S\$
Accumulated depreciation				
Building renovation – ISS	4,840	-	-	4,840
Building renovation – SADeaf	835,795	6,126	-	841,921
Furniture and equipment – SADeaf	170,511	23,196	(37,113)	156,594
Furniture and equipment – DAS	-	2,109	-	2,109
Furniture and equipment – ISS	56,771	3,081	-	59,852
Furniture and equipment – CS	-	18	-	18
Furniture and equipment – HCC	10,456	5,637	-	16,093
	<u>1,078,373</u>	<u>40,167</u>	<u>(37,113)</u>	<u>1,081,427</u>
	Balance b/f S\$			Balance c/f S\$
Net book value				
Building renovation – ISS	-			-
Building renovation – SADeaf	1,397			72,171
Furniture and equipment – SADeaf	57,821			53,642
Furniture and equipment – DAS	-			8,438
Furniture and equipment – ISS	8,324			8,121
Furniture and equipment – CS	-			1,084
Furniture and equipment – HCC	<u>15,684</u>			<u>16,177</u>
	<u>83,226</u>			<u>159,633</u>

The Singapore Association for the Deaf
[UEN. S62SS0061C]
[IPC No. IPC000444]

Audited Financial Statements
Financial Year Ended 31 March 2017

6. Property, plant and equipment (Cont'd)

2016	Balance b/f	Additions	Written off	Balance c/f
Cost	S\$	S\$	S\$	S\$
Building renovation – ISS	4,840	-	-	4,840
Building renovation – SADeaf	837,192	-	-	837,192
Furniture and equipment – SGD	1,989	-	(1,989)	-
Furniture and equipment – SADeaf	255,524	14,093	(41,285)	228,332
Furniture and equipment – ISS	65,095	-	-	65,095
Furniture and equipment – HCC	26,140	-	-	26,140
	<u>1,190,780</u>	<u>14,093</u>	<u>(43,274)</u>	<u>1,161,599</u>
	Balance b/f	Depreciation	Written	Balance c/f
	S\$	charge	back/ off	S\$
		S\$	S\$	
Accumulated depreciation				
Building renovation – ISS	4,840	-	-	4,840
Building renovation – SADeaf	835,069	726	-	835,795
Furniture and equipment – SGD	1,989	-	(1,989)	-
Furniture and equipment – SADeaf	193,049	18,747	(41,285)	170,511
Furniture and equipment – ISS	53,834	2,937	-	56,771
Furniture and equipment – HCC	5,228	5,228	-	10,456
	<u>1,094,009</u>	<u>27,638</u>	<u>(43,274)</u>	<u>1,078,373</u>
	Balance b/f			Balance c/f
	S\$			S\$
Net book value				
Building renovation – ISS	-			-
Building renovation – SADeaf	2,123			1,397
Furniture and equipment – SGD	-			-
Furniture and equipment – SADeaf	62,475			57,821
Furniture and equipment – ISS	11,261			8,324
Furniture and equipment – HCC	<u>20,912</u>			<u>15,684</u>
	<u>96,771</u>			<u>83,226</u>

During the financial year, depreciation was charged to the following funds:

	2017	2016
	S\$	S\$
Depreciation – general		
Secretariat	19,323	10,076
CS	18	-
ISS	3,081	2,938
DAS	2,109	-
HCC	<u>5,637</u>	<u>5,228</u>
	<u>30,168</u>	<u>18,242</u>
Depreciation – care and share		
CAS	<u>9,999</u>	<u>9,396</u>
	<u>40,167</u>	<u>27,638</u>

7. Accruals and other payables

	2017 S\$	2016 S\$
Accruals	94,862	103,061
Seniors' mobility and enabling fund and financial assistance payables	-	49,927
Subscription fees received in advance	4,065	3,338
	<u>98,927</u>	<u>156,326</u>

At the reporting date, the carrying amounts of accruals and other payables approximated their fair values.

8. Accumulated funds

	Balance at beginning of year S\$	Surplus / (Deficit) S\$	Transferred in / (utilised)			Balance at end of the year S\$
			Accumulated funds S\$	Social group of the deaf fund S\$	SADeaf HCC fund S\$	
2017						
Unrestricted funds						
Accumulated funds						
- SADeaf	1,368,391	(15,075)	(146,981)	-	-	1,206,335
- PITCH	61,375	(61,375)	-	-	-	-
	<u>1,429,766</u>	<u>(76,450)</u>	<u>(146,981)</u>	<u>-</u>	<u>-</u>	<u>1,206,335</u>

Restricted funds						
Accumulated funds						
- ISS	691,399	277,365	-	-	-	968,764
- DAS	-	(64,875)	64,875	-	-	-
- Care and Share	508,230	(449,496)	-	-	-	58,734
- CS	-	(82,106)	82,106	-	-	-
- HCC	-	37,246	-	-	(37,246)	-
- SGD	-	(528)	-	528	-	-
	<u>1,199,629</u>	<u>(282,394)</u>	<u>146,981</u>	<u>528</u>	<u>(37,246)</u>	<u>1,027,498</u>

	Balance at beginning of year S\$	Surplus / (Deficit) S\$	Transferred in / (utilised)			Balance at end of the year S\$
			Accumulated funds S\$	Social group of the deaf fund S\$	SADeaf HCC fund S\$	
2016						
Unrestricted funds						
Accumulated funds						
- SADeaf	1,166,607	372,135	(170,351)	-	-	1,368,391
- PITCH	61,375	-	-	-	-	61,375
	<u>1,227,982</u>	<u>372,135</u>	<u>(170,351)</u>	<u>-</u>	<u>-</u>	<u>1,429,766</u>

Restricted funds						
Accumulated funds						
- ISS	511,530	179,869	-	-	-	691,399
- DAS	91,450	(94,936)	3,486	-	-	-
- Care and Share	183,249	324,981	-	-	-	508,230
- CS	-	(166,865)	166,865	-	-	-
- HCC	-	124,385	-	-	(124,385)	-
- SGD	-	(2,003)	-	2,003	-	-
	<u>786,229</u>	<u>365,431</u>	<u>170,351</u>	<u>2,003</u>	<u>(124,385)</u>	<u>1,199,629</u>

The Singapore Association for the Deaf
[UEN. S62SS0061C]
[IPC No. IPC000444]

*Audited Financial Statements
Financial Year Ended 31 March 2017*

9. Designated funds

- 9.1 Special activities fund was established to implement programmes/activities, which are not funded by the National Council of Social Service (NCSS).
- 9.2 Special event fund was established to provide funding for special events from Estate of Noel Evelyn Norris.
- 9.3 General fund was set up for the Redevelopment Project.
- 9.4 Social group of the deaf (SGD) fund, formerly known as deaf development fund was established to fund:
 - a. Any shortfall in SGD annual operating expenses excluding programme fees.
 - b. Delegates going overseas to attend World Federation of the Deaf meetings/conferences and Comite International Des Sports Des Sourds functions/events as and when the Executive Council deems fit.
 - c. Any other functions/events, which SGD proposes and the Executive Council deems fit.
- 9.5 Mainly I Love Kids (MILK) fund was established to support programmes, which develop children to be contributing members of Association.
- 9.6 MVS fund was established to provide any shortfall in the expenditure of the Mountbatten Vocational School.
- 9.7 SADeaf hearing care centre fund was established to fund the recurring expenses of the centre.
- 9.8 Special activities fund was established to implement programmes/activities for children, which are funded by the Children's Charities Association of Singapore.
- 9.9 Tertiary education fund comprises the Lye Swee Peng, Seow Kuan, Lim Chin Liong, Madam C K Ng and Tertiary education funds. The fund is used for providing scholarships and bursaries to Deaf students.
- 9.10 Welfare fund was established to supplement financial assistance such as financial grants and hearing aids to the needy clients.

10. Fundraising activities

	Total proceeds S\$	Total fundraising expenses S\$	Net fundraising income S\$
2017			
Car wash	5,253	-	5,253
Youth for causes	5,942	1,458	4,484
Year end appeal	101,245	4,303	96,942
Others	58,227	5,472	52,755
	<u>170,667</u>	<u>11,233</u>	<u>159,434</u>
2016			
Car wash	3,391	-	3,391
Charity walk	22,348	-	22,348
Flag day	19,627	2,928	16,699
Youth for causes	34,752	4,557	30,195
Year end appeal	81,029	447	80,582
Others	132,758	4,902	127,856
	<u>293,905</u>	<u>12,834</u>	<u>281,071</u>

11. Income tax

The Association is a charity registered under the Charities Act since 26 March 1962. Consequently, the income of the Association is exempted from tax under the provisions of Section 13 of the Income Tax Act Cap. 134.

The Singapore Association for the Deaf
[UEN. S62SS0061C]
[IPC No. IPC000444]

Audited Financial Statements
Financial Year Ended 31 March 2017

12. Related party transactions

The following transactions took place between the Association and related parties during the financial year at terms agreed between the parties:

	2017 S\$	2016 S\$
Programme income		
– The Singapore School for the Deaf (SSD)	4,520	-
– Mountbatten Vocational School (MVS)	680	-
HQ allocation income from related parties		
– The Singapore School for the Deaf (SSD)	-	30,000
– Mountbatten Vocational School (MVS)	-	30,000

The balances with related parties as at the reporting date are set out in Note 5.

Key management personnel remuneration and benefits

	2017 S\$	2016 S\$
Sign language instructor allowances for Executive Council members	1,470	3,000
Salaries and other short-term employee benefits	175,865	191,935
Post-employment benefits – contribution to CPF	27,062	31,771
	<u>204,397</u>	<u>226,706</u>
	No. of key management personnel	No. of key management personnel
Remuneration band		
S\$100,001 to S\$200,000	-	-
S\$100,000 and below	<u>3</u>	<u>3</u>

Members of the Executive Council are volunteers and none received any remuneration or reimbursement during the year ended 2017 except as disclosed above.

13. Operating lease commitments

As at the reporting date, the Association has commitments for future minimum lease payments under non-cancellable operating leases as follows:

	2017 S\$	2016 S\$
Not later than one year	415,618	415,618
Later than one year but not later than five years	-	415,618
	<u>415,618</u>	<u>831,236</u>

The above operating lease commitments are based on known rental rates as at the date of this report and do not include any revision in rates, which may be determined by the lessor.

14. Financial risk management

The Association's activities expose it to minimal financial risks and overall risk management is determined and carried out by the Executive Council.

14.1 Liquidity risk

The Association manages its liquidity risk by monitoring and maintaining a level of cash and cash equivalents deemed adequate by the Executive Council to fund the Association's operations.

14.2 Credit risk

Credit risk arises mainly from the risk on counterparties defaulting on the terms of their agreements. The carrying amounts of cash and cash equivalents and other receivables represent the Association's maximum exposure to credit risk in relation to financial assets. The credit risk on balances of cash and cash equivalents is considered low as surplus funds are placed in fixed deposits with reputable banks.

14.3 Interest rate risk

The Association's exposure to interest rate risk relate primarily to the fixed deposits placed with banks. The Association is not exposed to significant interest rate risk.

14.4 Foreign currency risk

The Association does not engage in trading of or speculation in foreign currencies and does not have any financial instruments that are exposed to significant foreign currency risks.

14.5 Fair values

The carrying amounts of the financial assets and liabilities recorded in the financial statements of the Association approximate their fair values due to their short-term nature.

15. Tax deductible donations

	2017 S\$	2016 S\$
Tax deductible donations received during the year	<u>345,480</u>	<u>504,068</u>

The Singapore Association for the Deaf
[UEN. S62SS0061C]
[IPC No. IPC000444]

*Audited Financial Statements
Financial Year Ended 31 March 2017*

16. Reserve policy and position

The reserves that the Association has set aside provide financial stability and the means for the development of its principal activities. The Association intends to maintain its reserves at a level that is at least equivalent to one year's expenses to ensure the continued running and smooth operation of the Association. The intended use of the reserves is for the operational need of the Association. The Executive Council will review the amount of reserves that is required to ensure that they are adequate to fulfil the Association's continuing obligations on a half-yearly basis.

The Association's reserve position for financial year ended 31 March 2017 is as follows:

		2017 S\$'000	2016 S\$'000	Increase / (Decrease) %
A	Unrestricted funds			
	Accumulated funds	1,206	1,430	(15.66)
	Unrestricted designated funds	1,454	1,465	(0.75)
	Total unrestricted funds	2,660	2,895	(8.12)
B	Restricted funds			
	Accumulated funds	1,027	1,200	(14.42)
	Unrestricted designated funds	2,385	2,204	(8.21)
	Total restricted funds	3,412	3,404	0.24
C	Endowment funds	-	-	-
D	Total funds	6,072	6,299	(3.60)
E	Total annual operating expenditure	3,633	3,366	7.93
F	Ratio of funds to annual operating expenditure (A/E)	0.73	0.86	

Reference:

- C. An endowment fund consists of assets, funds or properties that are held in perpetuity which produce annual income flow for a foundation to spend as grants.
- D. Total Funds include unrestricted, restricted and endowment funds.
- E. Total Annual Operating Expenditure includes expenses related to Cost of Charitable Activities and Governance and Other Operating and Administration expenses.

17. Conflict of interest policy

Whenever a member of the Executive Council is in any way, directly or indirectly, has an interest in a transaction or project or other matter to be discussed at a meeting, the member shall disclose the nature of his interests before the discussion on the matters begins.

The member concerned should not participate in the discussion or vote on the matter, and should also offer to withdraw from the meeting and the Board shall decide if this should be accepted.

18. Authorisation of financial statements

These financial statements were authorised for issue in accordance with a resolution of the Executive Council on **28 AUG 2017**

**SUBSEQUENT PAGES COMPRISING DETAILED INCOME AND EXPENDITURE STATEMENTS
FORM PART OF THE AUDITED FINANCIAL STATEMENTS**

Appendix 1 DETAILED INCOME AND EXPENDITURE STATEMENT FOR THE FINANCIAL YEAR ENDED 31 MARCH 2017 – ACCUMULATED FUNDS

	Unrestricted	Restricted					Total
	Secretariat S\$	CAS S\$	CS S\$	ISS S\$	DAS S\$	RT S\$	S\$
Income							
Income from generated funds							
Voluntary income							
- Donations	206,617	-	105,000	-	-	-	300
- Grants for rental of land	415,618	-	-	-	-	-	-
- Other grants and sponsorships	30,942	7,500	9,684	5,715	25,550	-	1,767
Activities for generating funds							
- Fundraising income	150,667	20,000	-	-	-	-	-
- Collections from events	-	67,966	807	-	500	-	30
Fixed deposit income							
- Interest	35,801	-	-	-	-	-	-
	839,645	95,466	115,491	5,715	26,050	-	2,097
Income from charitable activities							
Grant from NCSS / Community Chest	36,139	-	-	315,356	-	-	-
Grant refund to NCSS (PITCH)	(61,375)	-	-	-	-	-	-
Grant from MSF	-	-	-	331,027	-	-	-
Grant from MOE	-	-	-	121,750	-	322,827	-
Grant from TOTE Board	43,806	-	154,288	-	246,772	-	-
Members subscription	6,641	-	-	-	-	-	-
Programme income	-	-	25	4,410	166,271	-	-
Interpretation fees collected	-	-	-	-	133,215	-	-
Sign language books	-	-	-	-	2,405	-	-
Sales of assistive devices	-	-	-	-	-	-	-
	25,211	-	154,313	772,543	548,663	322,827	94,113
							1,892,459
Other income							
HQ allocation	30,000	-	-	-	-	-	-
Welfare	-	-	-	-	-	-	-
Seniors' mobility and enabling fund	-	-	-	-	-	-	-
Miscellaneous income	1,240	-	50	1,613	-	-	-
	31,240	-	50	1,613	-	-	-
							210,000
							94,113
							1,892,459
Total income	896,096	95,466	269,854	779,871	574,713	322,827	2,348,941

DETAILED INCOME AND EXPENDITURE STATEMENT FOR THE FINANCIAL YEAR ENDED 31 MARCH 2017 - ACCUMULATED FUNDS (CONT'D)

	Unrestricted Secretariat S\$	CAS S\$	CS S\$	Restricted ISS S\$	DAS S\$	RT S\$	HCC/SGD S\$	Total S\$
Expenditure								
Cost of generating funds								
Fundraising expenses	11,233	-	-	-	-	-	-	-
Charitable activities								
Annual events	-	349,748	28,013	757	18,115	-	708	397,341
Professional fees and services	7,843	2,570	9,226	9,515	71,270	-	181	92,762
Purchase of assistive devices	-	-	-	-	-	-	202,452	202,452
Teaching material	-	-	-	-	2,788	-	-	2,788
Volunteer expenses	3,728	-	493	-	158	-	-	651
	11,571	352,318	37,732	10,272	92,331	-	203,341	695,994
Governance and other administrative costs								
Audit fee	6,564	2,200	-	2,996	-	-	-	5,196
Communications	6,055	-	4,948	6,511	10,778	-	791	23,028
Depreciation - general	19,323	-	18	3,081	2,109	-	5,637	10,845
Depreciation - care and share	-	9,999	-	-	-	-	-	9,999
HQ allocation	-	-	-	-	-	30,000	-	30,000
Insurance	2,156	-	1,540	1,847	3,387	580	308	7,662
Miscellaneous expenses	4,270	-	134	187	2,110	31	11	2,473
Publication and advertisements	3,342	-	2,994	3,781	5,489	-	418	12,682
Rental of land	415,618	-	-	-	-	-	-	-
Rental office equipment	1,514	-	1,067	1,484	2,355	-	195	5,101
Staff remuneration	406,871	154,215	247,530	386,539	406,987	247,824	47,958	1,491,053
Staff CPF contribution	60,609	26,230	38,577	61,017	68,637	42,156	8,153	244,770
Staff welfare and training	5,723	-	5,515	9,104	7,607	2,176	672	25,074
Supplies and materials	8,341	-	2,504	3,075	6,353	-	894	12,826
Transport	1,677	-	3,617	5,072	16,884	60	-	25,633
Upkeep of building and equipment	5,637	-	4,093	5,127	10,826	-	808	20,854
Utilities	2,042	-	1,691	2,413	3,735	-	306	8,145
	949,742	192,644	314,228	492,234	547,257	322,827	66,151	1,935,341
Total expenditure	972,546	544,962	351,960	502,506	639,588	322,827	269,492	2,631,335

The Singapore Association for the Deaf
[UEN. S62SS0061C]
[IPC No. IPC0000444]

Financial Statements
Financial Year Ended 31 March 2017

DETAILED INCOME AND EXPENDITURE STATEMENT FOR THE FINANCIAL YEAR ENDED 31 MARCH 2017 - ACCUMULATED FUNDS (CONT'D)

	Unrestricted	Restricted					Total
	Secretariat S\$	CAS S\$	CS S\$	ISS S\$	DAS S\$	RT S\$	S\$
(Deficit) / Surplus for the year	(76,450)	(449,496)	(82,106)	277,365	(64,875)	-	(282,394)
Funds transferred (out)/ in	(146,981)	-	82,106	-	64,875	-	110,263
Net movement in funds	(223,431)	(449,496)	-	277,365	-	-	(172,131)

CS	- Community Services	CAS	- Care and Share	SGD	- Social Group of the Deaf
ISS	- Itinerant Support Service	DAS	- Deaf Access Services	PITCH	- Parent-Information Tool for Co-ordinated Help
RT	- Resource Teachers	HCC	- Hearing Care Centre		(formerly known as CHOICE)



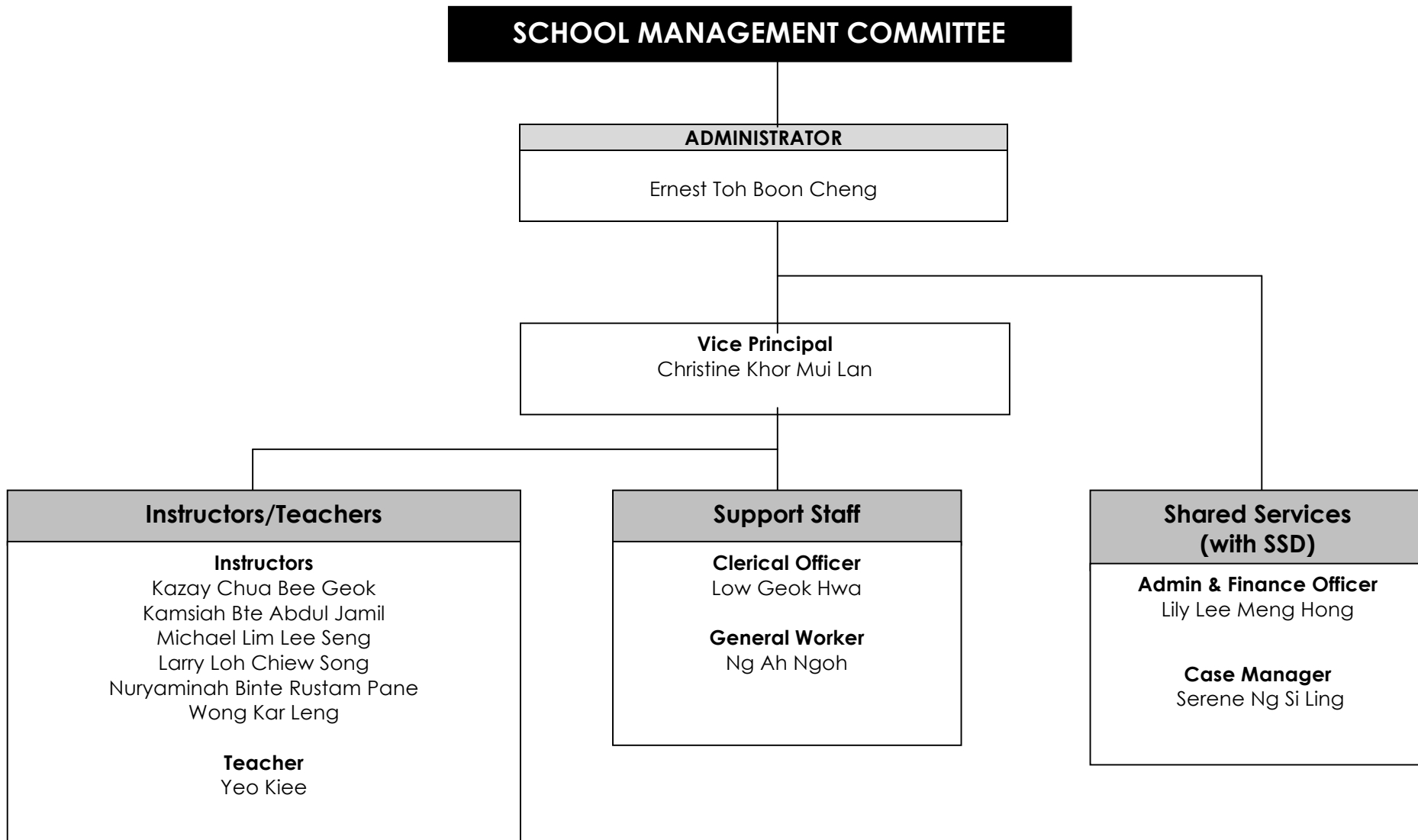
MOUNTBATTEN VOCATIONAL SCHOOL (MVS)

An Affiliate School
of the Singapore Association for the Deaf
An  Approved Training Centre

MOUNTBATTEN VOCATIONAL SCHOOL

STAFF ORGANISATION CHART

(as at 31 March 2017)



Mountbatten Vocational School (MVS)

Enrolment for MVS as at 31 March 2017 is as follows:

Enrolment by Disability and Gender

Class	Disability			Gender		Total
	Deafness	Intellectual	Multiple	Male	Female	
Year 1						
1.1 to 1.4	2	50	1	32	21	53
Year 2						
ISC Food & Beverage Service	1	12	0	5	8	13
ISC Food Preparation	0	12	0	11	1	12
ISC Housekeeping Operations	0	0	0	0	0	0
Non-ISC Programme	0	3	0	2	1	3
Total	3	77	1	50	31	81
Percentage	4%	95%	1%	63%	37%	

School Profile

MVS is an Approved Training Centre (ATC) for conducting ITE Skills Certificate (ISC) training programme. Currently, MVS offers the ITE Certificates in Food Preparation, Food and Beverage Service and Housekeeping Operations.

Mountbatten Vocational School (MVS)

Meeting Industry Needs

For the year 2016 cohort, 71% met the criteria in the overall performance in the core component subjects, and progressed to Year 2 work-based training (Industrial Attachment) segment. Attrition was at 5% for this cohort. 24% of the cohort was placed on review with the aim of extending the ISC training programme.

The promotion rate of the year 2016 cohort in Year 1 ITE ISC training programme is as follows:

Year 1 Trainees		
Number Met Criteria and Progressing	26	55%
Number being Retained	21	45%
Attrition Rate	0	0%
Total	47	100%

Making it to the Finishing Line

For the Year 2015 cohort, a total of 24 trainees progressed to Year 2, of which 19 had successfully completed ISC work-based training on 18 November 2016 and they will be awarded the ITE Skills Certificates on 5 August 2017. Three students will receive the MVS Vocational Training Certificates.

Number Admitted		
Number Met Criteria and Completed Year 2 ISC Work-Based Training Successfully	19	79%
Number Placed in Non-ISC Programme	3	13%
Attrition Rate	2	8%
Total	24	100%

Mountbatten Vocational School (MVS)

Training And Employment Opportunities

MVS would like to thank all our work-based training partners for their contributions towards the successful job placements of our trainees. All the twenty ISC trainees who successfully completed the programme were offered employments but only seven took up the offers.

The conversion from training to employment placements for trainees in the 2016 cohort in the Year 2 Work-Based Training is as follows:

	Number of Trainees in Year 2 Work-Based Training	Total attrition rate	Number completed programme successfully	Number unsuccessful in programme	Employed As at 31 Jan 2017
Food Preparation	8	1	7	0	4
Food & Beverage Services	13	1	12	0	8
Housekeeping Operations	0	0	0	0	0
Non ISC Programme	3	0	3	0	1
Total	24	2	22	0	13

All the trainees who completed their ISC work-based training successfully were offered employment but out of the 19, 12 were still working at the time of this report. Others who did not take up the offers were due to parental wishes or National Service.

Mountbatten Vocational School (MVS)

Work-Based Training Partners for the Year 2016

MVS would like to thank the following companies for participating as our work-based training partners for year 2016:

Sector	Work-Based Training Partners		
Food and Beverage Service	Blisse Restaurant and Catering	Siloso Beach Resort Pte Ltd	Seoul Garden
Food Preparation	Crowne Plaza Hotel	Siloso Beach Resort Pte Ltd	Seoul Garden
Housekeeping Operations	Peninsula Excelsior	YMCA International House	

Financial Assistance

MVS ensures that trainees were provided with adequate assistance to enable them to meet school-related expenses through the disbursements of the School Bursary Project (SBF), School Pocket Money Fund (SPMF), South East Edu Assist Fund (SEEAF) and The Singapore Buddhist Lodge Education Foundation (SBLEF) Bursary Award. For the period under review, 24 trainees received the SBF, three trainees received the SPMF, 25 trainees received the SEEAF and 12 trainees received the SBLEF Bursary Award.

Mountbatten Vocational School (MVS)

Programmes And Activities

In collaboration with volunteers and partners in the community, MVS provided a variety of programmes and activities that helped to enrich the learning journey of the trainees. Below are a few of the highlights:

Graduation for Year 2014 Cohort (completion in November 2015)

After two years of training, the trainees of the Year 2014 cohort were rewarded for their hard work during the graduation ceremony held on 27 August 2016, at the Holiday Inn City Centre Hotel. We were honoured by the presence of Ms Tin Pei Ling, the Member of Parliament for MacPherson, who graced the occasion as our Guest-of-Honour.

The ceremony was attended by 140 invitees that included Year 2 trainees, graduates, staff, work-based training representatives, SMC members, EXCO members, parents and guests. Our Guest-of-Honour presented 20 certificates to the graduates and 12 awards to trainees who had done well in the previous school-year.

*Ms Tin Pei Ling,
the Guest-of-Honour,
with SMC Chairman,
Mr Gregory Wee,
guests, staff and trainees*





*Students and staff,
representing the
Singapore Association
for the Deaf at the
Purple Parade*

Purple Parade

On 5 November 2016, MVS students and Staff joined other participants from the Singapore Association for the Deaf at the Purple Parade which was held at the Suntec City.



*Students and staff getting ready for
activities at the Y-Camp!*

Y-Camp

14 students, two alumni and three staff members went on a camp organized by the YMCA from 3-5 June. The camp participants came from various SPED schools and other organisations for people with disabilities. The camp allowed our students to gain new experiences and learn new skills and knowledge.

Children's Charities Association Christmas Carnival and Walkathon

Students and staff participated in the Children's Charities Association Christmas Carnival and Walkathon on 26 November 2016. A group of them performed a song-signing cum Hip-Hop dance routine to entertain the crowd who attended the event.



Photo opportunity with a giant Christmas tree along Orchard Road!



*Students and staff
treated to a lion dance
at the newly renovated
multi-purpose hall!*

Chinese New Year Celebration

On 27 February 2017, the students and staff of MVS celebrated the Chinese New Year with food and games. We had a fashion show, lion dance, and goodie bags with oranges and other CNY candies for the trainees at the end of the programme.

Beach Day Out @ Sentosa

The whole school went on an outing with the Wyeth Nutrition (Singapore) volunteers at the Sentosa Beach on 11 November 2016. The programme included cleaning up the beach, fun games, awards for students who performed well in their training and a buffet lunch. We would like to thank Wyeth Nutrition (Singapore) for its continuous support of our school programmes.

*A fun day at the
Sentosa Beach!*





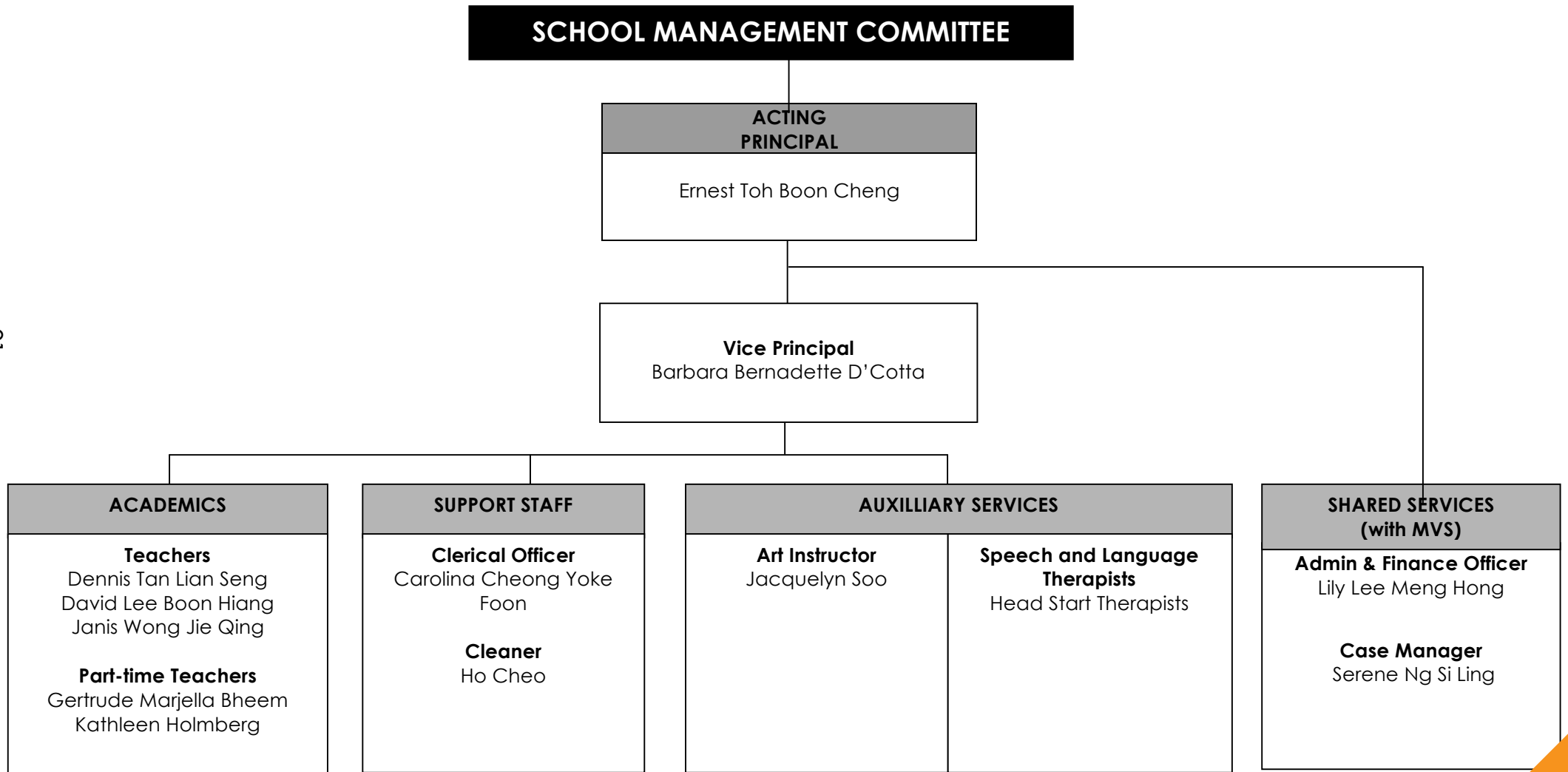
SINGAPORE SCHOOL FOR THE DEAF (SSD)

**An Affiliate School
of the Singapore Association for the Deaf**

SINGAPORE SCHOOL FOR THE DEAF

STAFF ORGANISATION CHART

(as at 31 March 2017)



Singapore School For The Deaf (SSD)

Pupil's Profile

The class enrolment of SSD by level and gender as at 31 March 2016 is as follows:

Level	Age Range	Number of Classes	Male	Female	Total
Primary 1		0	0	0	0
Primary 2		0	0	0	0
Primary 3		0	0	0	0
Primary 4		0	0	0	0
Primary 5	13 to 15	1	1	1	2
Primary 6		0	0	0	0
Total		1	1	1	2

Academic Report

There was a total of 4 pupils in Primary 4 and 6 enrolled at the beginning of the year 2016. One pupil in Primary 6 passed her PSLE and progressed to Beatty Secondary School. The other pupil continued his studies at Mountbatten Vocational School.

The school took holistic approach in meeting the needs of the pupils, which looked into the academic, physical, and socio-emotional aspects. The School also provided remedial classes and extra tutoring to help the pupils in their weaker subjects, especially for the PSLE class.

Singapore School For The Deaf (SSD)

Programmes And Activities

The school had many programmes and activities for the pupils throughout the school-year. Below are a few highlights.

Co-Curricular Activities (CCA)

Thursdays are set aside for the pupils' Co-Curricular Activities (CCA). In 2016, we continued with swimming lessons for the pupils at Katong Swimming Complex, as they not only learned proper swimming techniques but also built up their strength and confidence. In January 2017, our students began swimming lessons with Lighthouse School students at the Toa Payoh Swimming Complex.



Warming up exercise at the Toa Payoh Swimming Complex



Lessons in the pool

Singapore School For The Deaf (SSD)

Programmes And Activities



Pupils, staff and volunteers at the Lim Chu Kang WWII First Landing Site



Fun with frogs at the Jurong Frog Farm



Mr Dennis Tan, leading the way at the Sarimbun Scout



Campfire at Sarimbun Scout Camp



Games Day at Lighthouse School

Joint-Camp and Games Day with Lighthouse School

Since 2013, Singapore School for the Deaf (SSD), had been engaging Lighthouse School (LHS) for joint programmes, starting with SSD inviting LHS to its Games Day 2013. In 2016, both schools had two joint programmes which were worth noting.

The first was the "Silent Learning Journey" from 26th to the 27th of May. SSD students, alumni, staff, and volunteers from the Singapore Association for the Deaf, participated in this joint programme with LHS, to foster a closer tie between the various groups of Deaf in the community. In addition to the overnight stay at the Sarimbun Scout Camp which was filled with activities, the students also had educational visits to Hay Dairies (goat farm), Jurong Frog Farm, Lim Chu Kang WWII First Landing Site, and Kranji War Memorial.

In 2016, for the first time, Games Day was held at LHS on 22 July, instead of SSD. It was a fun-filled day for pupils and parents.



At the steps of the Kranji War Memorial



Warming up exercise before the games



Elhann reaching for the finish line



Elisa with her trophies



Zi Xuan in deep concentration in a challenging game

Singapore School For The Deaf (SSD)

Programmes And Activities



At the Changi Airport, all ready for the Hong Kong trip!



First stop in Hong Kong, the Zero Carbon Building



Enjoying the colourful festive decorations in HK



Picture opportunity with the principal and staff of Notre Dame College

Learning Journey to Hong Kong

The learning journey to Hong Kong finally happened in November 2016. Pupils had been hoping to visit this region of China since 2013, after their trip to Perth, Australia. Four pupils together with eight ex-pupils, and five school staff, went on a five-day learning journey to Hong Kong, from 14-18 November 2016. On this trip, the pupils had the opportunity to visit many places of interest including Zero Carbon Building, where they learned about environmental friendly designs for homes and building, The Notre Dame College with co-enrollment secondary school programme for Deaf students, Our Hands Farm, where they learned about organic farming, the Ocean Park with a session with the Bottlenose Dolphins, and the Hong Kong Film Archive. As a special treat for them, on the trip back to Singapore, the Singapore Airline's Captain, allowed the pupils to visit the cockpit of the plane after it landed at Changi Airport.



Pupils participating in a class lesson at Notre Dame College



Enjoying a walk through the streets of Hong Kong



Pupils put to work at the Our Hands Farm



With the crew of SIA after visiting the cockpit

Singapore School For The Deaf (SSD)

Services

Social Work Services

The Social Work Section looks into the welfare of pupils. This includes their socio-emotional, behaviour and financial well-being. It also oversees and manages the volunteers of the School.

Financial assistance for needy pupils are given in the form of the School Pocket Money Fund and various educational funds. These funds helped the needy pupils with their pocket money, transport fees, school fees, textbooks and cost for purchase and repair of ear moulds and hearing aids. Financial assistance is procured from MOE Financial Assistance Scheme, NCSS, SgEnable, MILK Fund, Southeast CDC and generous donations from the public. Besides once-off financial aids, the financial assistance cases are reviewed every three to six months.

Home visits are conducted for the purpose of financial assessments. During home visits, if required, counselling may be given on family budgeting, and challenges and needs may be discussed. Getting to know the family allows the School to be in a better position to understand and assist the pupils.

Speech, Language and Audiological Services

Speech, language and audiological services are provided to all pupils. These services enhance the pupils' hearing and equip them with listening skills and develop correct articulation. The services include hearing tests and hearing aid fittings. The pupils are regularly briefed on the care and maintenance of hearing aids.

Auditory and speech training sessions are conducted for all pupils in a one to one session. Out of the 9 pupils, three pupils showed significant improvement in their listening and oral (verbal) language skills.

Appendix - Committees

Committees for FY2016/2017

Administration and Finance Committee

Ms Wong Ee Kean	Co-Chairman
Dr Zahabar Ali	Co-Chairman
Mr Gregory Wee Chong Yeow	Member
Ms Helen Lee	Member
Ms Irene Yee Choy Peng*	Member
Mr Martin Marini Vincent	Member
Ms Tan Keng Ying*	Member
Ms Sylvia Teng	Executive Director
Mr John Chan	Admin and Finance Manager

Audit Committee

Ms Valerie Tan Kiah Wah	Chairman
Mr Chew Mun Kai*	Member
Ms Ngiam Share Ching	Member

Human Resource Committee

Ms Wong Ee Kean	Chairperson
Ms Chua Siew Cheng	Member
Ms Irene Yee Choy Peng*	Member
Mr Steven Lee Chee Phat	Member

Deaf Access Committee

Ms Tan Keng Ying*	Chairperson
Mr Neo Hock Ping*	Member
Ms Low Jarn May*	LSC Chairperson (till February 2017)
Mr Philip Choy Peng Lih*	SLI-SC Chairperson (till September 2016)
Mr Dennis Tan Lian Seng*	SLI-SC and LSC Chairperson from September 2016 and March 2017 respectively
Mr Moses Chan Ka Wai*	Staff Representative (for SLI-SC)
Ms Siti Rohanna Binte Omar	Staff Representative (for LSC)
Mr Zach Tay Ming Lin	Staff Representative (For SLT-SC)
Ms Jessica Mak Wei-E*	Staff Secretariat (till February 2017)
Mr Ong Kay Chin James*	Staff, Executive (from August 2016)

* Deaf/Hard-of-hearing

Appendix - Committees

Committees for FY2016/2017

Linguistics Sub-committee

Ms Low Jarn May*	Chairperson (till January 2017)
Mr Dennis Tan Lian Seng*	Chairperson (from May 2017)
Dr Fransteik Kratochvil	Member
Ms Barbara D'Cotta	Member
Ms Wang Li-Sa	Member
Ms Jessica Mak Wei-E*	Staff Secretariat (till February 2017)
Ms Siti Rohanna Binte Omar	Staff Secretariat (from March 2017)
Mr Ong Kay Chin James*	Staff, Executive (from August 2016)

Sign Language Instruction Sub-committee

Mr Dennis Tan Lian Seng*	Chairperson
Mr Philip Choy Peng Lih*	Chairperson (till September 2016)
Mr Andrew Tay Kiam*	Instructor
Mr David Lee Boon Hiang*	Instructor
Ms Elaine Teo Bee Leng*	Instructor
Mr Freddie Soh Tiong Leong*	Instructor
Ms Irene Yee Choy Peng*	Instructor
Ms Lau Ee Wun*	Instructor
Ms Loh Yee Chen*	Instructor
Ms Shirley Chew Suat Li*	Instructor
Ms Tina Lau Saw Hui*	Instructor
Ms Wong Ai Ling*	Instructor
Ms Yam Leng Leng*	Instructor
Ms Yew Hau En*	Instructor (till February 2017)
Mr Moses Chan Ka Wai*	Staff Secretariat
Ms Jessica Mak Wei-E*	Staff Secretariat (till February 2017)
Mr Ong Kay Chin James*	Staff Secretariat (from March 2017)

Community Services Committee

Mr Chang Wah Wing	Chairperson
Mr Chew Mun Kai*	Member
Mr Leonard Lim Jiun Yih	Member
Ms Tay Lay Hong*	Member
Ms Wong Ai Ling*	Staff, Principal Case Manager
Ms Alexis Chok	Staff, Case Manager
Ms Rosa Yan	Staff, Case Manager
Mr Lai Siu Fai	Staff, Audiology Manager
Mr Ong Kay Chin James*	Staff, Executive Officer - Programme (till July 2016)

* Deaf/Hard-of-hearing

Appendix - Committees

Committees for FY2016/2017

Social Group of the Deaf

Ms Tay Lay Hong*	Chairman
Mr Teo Bee Chuan*	Vice Chairman
Ms Celissa Zhong Suwen*	Secretary
Ms Amy Ho*	Committee Member
Ms Judy Ong Lian Hwai*	Committee Member
Mr Ken Neo Hock Ping*	Committee Member
Ms Naomi Ng Yee Ping*	Committee Member
Mr Sunny Tian Seow Yoong*	Committee Member
Mr Ong Kay Chin James*	Staff, Executive Officer - Programme (till July 2016)
Ms Wong Ai Ling*	Staff, Principal Case Manager (from August 2016)

Singapore Deaf Youth Section (SDYS)

Ms Loh Yee Chen*	President
Ms Yew Hau En*	Vice president
Ms Angeline Chen Ziyue*	Secretary
Mr Chua Kim Leng Dave*	Treasurer
Ms Chen Jieying*	Member
Ms Nurul Humairah Binte Omar*	Member
Ms Jessica Mak Wei-E*	Advisor
Mr Ong Kay Chin*	Staff, Executive Officer - Programme (till July 2016)
Ms Wong Ai Ling*	Staff, Principal Case Manager (from August 2016)

Award Vetting Panel

Mr Ken Neo Hock Ping*	Chairman
Ms Irene Yee Choy Peng*	Advisor
Ms Charlene Diana Batchlor-Wong*	Touch Silent Club representative
Ms Janice Lum Kai Kuen	ITE representative
Mr Richard Choo Wing Hoong*	Member of deaf Community
Mr Ong Kay Chin James*	Staff, Executive Officer – Programme (till September 2016)
Ms Wong Ailing	Staff, Principal Case Manager (from August 2016)

Tuition Enrichment Programme

Ms Jessica Lim Jia Ying	Chairperson, NTU, RSPCDC
-------------------------	--------------------------

Igniters

Mr Toh You Xin*	Chairperson
-----------------	-------------

* Deaf/Hard-of-hearing

Appendix - Committees

Committees for FY2016/2017

Signifique

Ms Pet Tan

Instructor

WFD-RSA Committee

Mr Lim Chin Heng*

Mr Edwin Lim

Mr Alfred Yeo*

Mr Kelvin Goh*

Ms Lucy Lim

Ms Pet Tan

Ms Tan Keng Ying*

Ms Yew Hau En*

Organising Chairman

Fundraising

Programme

Media & Publicity

Interpretation

Admin

Logistics

Youth Camp

Mountbatten Vocational School

Members of the School Management Committee:

Mr Gregory Wee Chong Yeow

Mr Jeremy Chan Sek Wai

Mr Chew Mun Kai*

Ms Lim Kim Yean, Sally

Mr Louis Tan Hong Pheow

Ms Margarita Hale

Mr Steven Lee Chee Phat

Mr Ernest Toh Boon Cheng

Ms Christine Khor Mui Lan

Chairman

Hon Treasurer

Member

Member

Member

Member

Member

Administrator (MVS)

Vice Principal (MVS)

Singapore School for the Deaf

Members of the School Management Committee:

Mr Martin Marini Vincent

Mr Jevons Yip Bao Chung

Ms Christina Michael

Mr Chew Mun Kai*

Dr Elaine Tan

Dr Tan Chay Hoon

Prof Veena Dhananjay Jadhav

Mr Ernest Toh Boon Cheng

Chairman

Hon Treasurer

MOE Representative

Member

Member

Member

Member

Administrator (SSD)

TERMS USED TO REFER TO PEOPLE WITH HEARING LOSS

✓ APPROPRIATE TERMS

Using appropriate term shows respect and accords dignity to the community.



deaf

(with a small letter d)

General term used to describe people with hearing loss of varying degrees, regardless of the communication mode they use (such as sign language, speaking or lip reading).



Deaf

(with a capital D)

Describes people with hearing loss who use sign language to communicate, and who identify themselves as members of a Deaf community and culture. They are more likely to have been born or become deaf early in life, and use sign language as their preferred communication mode.



Hard-of-hearing

Describes people with hearing loss which is usually acquired post-lingually and who prefer to communicate via speech.

✗ INAPPROPRIATE TERMS

These terms should never be used because they are outdated and extremely offensive.



hearing impaired

Often used to refer to people with hearing loss. But note it is viewed negatively by the Deaf community because of its linkage to medical terminology. The preferred terms are either “Deaf” or “Hard of hearing”.



deaf and dumb

A deaf person is not dumb. Deaf people are the same as other people except they cannot hear as well.



deaf mute

A person who is mute is unable to talk. Deaf people have functioning vocal cords. In fact, some have very good speech.

If you wish to differentiate the Deaf and Hard-of-hearing with those who are not, do use the terms “hearing people” or “hearing”. Do not use the word “normal”.

Member of:



Accolade:









Supported by:



Ministry of Education
SINGAPORE



 227 Mountbatten Road, Singapore 397998
 +65 6344 8274
 +65 6345 7706
 info@SADeaf.org.sg
 SADeafSG
 www.SADeaf.org.sg